

**SAE 1045 QUENCHED & TEMPERED
STEEL
Iteration #26**

**MICROSTRUCTURAL DATA, MONOTONIC AND
FATIGUE TEST RESULTS**

B. Li and A. Fatemi

Department of Mechanical, Industrial, and
Manufacturing Engineering
The University of Toledo
Toledo, OH 43606

Prepared for:

The AISI Bar Steel Applications Group

August 1999

TABLE OF CONTENTS

| | |
|---|-----------|
| SUMMARY | 1 |
| I. EXPERIMENTAL PROGRAM | 2 |
| 1.1 MATERIAL AND SPECIMEN FABRICATION | 2 |
| 1.1.1 <i>Material</i> | 2 |
| 1.1.2 <i>Specimen</i> | 2 |
| 1.2 TESTING EQUIPMENT | 3 |
| 1.2.1 <i>Apparatus</i> | 3 |
| 1.2.2 <i>Alignment</i> | 4 |
| 1.3 TEST METHODS AND PROCEDURES | 5 |
| 1.3.1 <i>Monotonic tension tests</i> | 5 |
| 1.3.2 <i>Constant amplitude fatigue tests</i> | 6 |
| II. EXPERIMENTAL RESULTS AND ANALYSIS | 7 |
| 2.1 MICROSTRUCTURAL DATA | 7 |
| 2.2 MONOTONIC DEFORMATION BEHAVIOR | 7 |
| 2.3 CYCLIC DEFORMATION BEHAVIOR | 10 |
| 2.3.1 <i>Transient cyclic deformation</i> | 10 |
| 2.3.2 <i>Steady-state cyclic deformation</i> | 10 |
| 2.4 CONSTANT AMPLITUDE FATIGUE BEHAVIOR | 12 |
| REFERENCES | 27 |
| APPENDIX | 28 |

NOMENCLATURE

| | | | |
|---|--|--|---|
| A_0, A_f | initial, final area | S | engineering stress |
| HB, HRB, HRC | Brinell, Rockwell B-Scale, Rockwell C-Scale hardness number | YS, UYS, LYS, YS' | monotonic yield, upper yield, lower yield, cyclic yield strength |
| b, c, n | fatigue strength, fatigue ductility, strain hardening exponent | YPE | yield point elongation |
| D_0, D_f | initial, final diameter | S_u | ultimate tensile strength |
| e | engineering strain | %EL | percent elongation |
| E, E' | monotonic, midlife cycle modulus of elasticity | %RA | percent reduction in area |
| K, K' | monotonic, cyclic strength coefficient | $\sigma, \sigma_f, \sigma_f'$ | true stress, true fracture strength, fatigue strength coefficient |
| L_0, L_f | initial, final gage length | $\sigma_a, \sigma_m, \Delta\sigma$ | stress amplitude, mean stress, stress range |
| $N_{50\%},$ $(N_f)_{10\%},$ $(N_f)_{50\%},$ | number of cycles to midlife, 10% load drop, 50% load drop | $\epsilon_e, \epsilon_p, \epsilon$ | true elastic, plastic, total strain |
| $2N_f$ | reversals to failure | ϵ_f, ϵ_f' | true fracture ductility, fatigue ductility coefficient |
| P_f, P_u | fracture, ultimate load | $\epsilon_a, \epsilon_m, \Delta\epsilon$ | strain amplitude, mean strain, strain range |
| R | neck radius; or strain ratio | $\Delta\epsilon_e, \Delta\epsilon_p$ | elastic, plastic strain range |

UNIT CONVERSION TABLE

| <u>Measure</u> | <u>SI Unit</u> | <u>US Unit</u> | <u>from SI to US</u> | <u>from US to SI</u> |
|----------------|-----------------|-----------------|---|--|
| Length | mm | in | 1 mm = 0.03937 in | 1 in = 25.4 mm |
| Area | mm ² | in ² | 1 mm ² = 0.00155 in ² | 1 in ² = 645.16 mm ² |
| Load | kN | klb | 1 kN = 0.2248 klb | 1 klb = 4.448 kN |
| Stress | MPa | ksi | 1 MPa = 0.14503 ksi | 1 ksi = 6.895 MPa |
| Temperature | °C | °F | °C = (°F - 32)/1.8 | °F = (°C * 1.8) + 32 |

| | | | | |
|--------------------|----------------------------|------------------------------|--|----------------------------|
| <u>In SI Unit:</u> | 1 kN = 10 ³ N | 1 Pa = 1 N/m ² | 1 MPa = 10 ⁶ Pa = 1 N/mm ² | 1 Gpa = 10 ⁹ Pa |
| <u>In US Unit:</u> | 1 klb = 10 ³ lb | 1 psi = 1 lb/in ² | 1 ksi = 10 ³ psi | |

SUMMARY

The microstructural data, monotonic properties, and fatigue behavior data have been obtained for SAE 1045 Quenched & Tempered steel. The material was provided for the American Iron and Steel Institute (AISI) from Inland Steel Company. Microstructural data includes grain type, grain size, and inclusion content. Two tensile tests were performed to acquire the desired monotonic properties. Nineteen strain-controlled fatigue tests were performed to obtain the strain-life and cyclic stress-strain curves and properties. The experimental procedure followed and results obtained are presented and discussed in this report.

I. EXPERIMENTAL PROGRAM

1.1 Material and Specimen Fabrication

1.1.1 Material

The SAE 1045 Quenched & Tempered steel was manufactured by Inland Steel Company. This material was delivered to the University of Toledo in hex bar form. The distance between two opposite sides was approximately 1.20 inches prior to machining. For each cross-sectional cut, only one specimen was obtained. In Table 1, the chemical composition supplied by Inland Steel Company is shown.

1.1.2 Specimen

In this study, identical round specimens were used for the monotonic and fatigue tests. The specimen configuration and dimensions are shown in Figure 1. This configuration deviates slightly from the specimens recommended by ASTM Standard E606 [1]. The recommended specimens have uniform or hourglass test sections. The specimen geometry shown in Figure 1 differs by using a large secondary radius throughout the test section.

All specimens were machined in the Mechanical, Industrial, and Manufacturing Engineering Machine Shop at the University of Toledo. The specimens were initially turned on a lathe to an appropriate diameter for insertion into a CNC machine. Using the CNC machine, final turning was performed to achieve the tolerable dimensions specified on the specimen drawings.

A commercial round-specimen polishing machine was used to polish the specimen gage section. Four different grits of aluminum oxide lapping film were used: 30 μ , 15 μ , 9 μ , and 3 μ . The 3 μ grit was used as the final polish and polishing marks coincided with the specimens' longitudinal direction. The polished surfaces were carefully examined under magnification to ensure complete removal of machine marks within the test section.

1.2 Testing Equipment

1.2.1 Apparatus

An MTS closed-loop servo-controlled hydraulic axial load frame in conjunction with a Schenck-Pegasus digital servo-controller was used to conduct the tests. The calibration of this system was verified prior to beginning the test program. The load cell used had a capacity of 22 klb. Hydraulically operated grips using universal tapered collets were employed to secure the specimens' ends in series with the load cell.

Total strain was controlled for all tests using an extensometer rated as ASTM class B1 [2]. The calibration of the extensometer was verified using displacement apparatus containing a micrometer barrel in divisions of 0.0001 in. The extensometer had a gage length of 0.30 in and was capable of measuring strains up to 15 %.

In order to protect the specimens' surface from the knife-edges of the extensometer, ASTM Standard E606 recommends the use of transparent tape or epoxy to 'cushion' the attachment. For this study, it was found that application of transparent tape

strips was difficult due to the radius within the test section. Therefore, epoxy was considered to be the best protection. One disadvantage of epoxy is the variability of mixtures throughout the test program. As an alternative to epoxy, M-coat D offered a more consistent mixture. Therefore, the tests were performed using M-coat D.

All tests were conducted at room temperature and were monitored using a digital thermometer. In order to minimize temperature effects upon the extensometer and load cell calibrations, fluctuations were maintained within ± 2 °C (± 3.6 °F) as required by ASTM Standard E606. Also, the relative humidity of the air was monitored using a precision hydrometer.

1.2.2 Alignment

Significant effort was put forth to align the load train (load cell, grips, specimen, and actuator). Misalignment can result from both tilt and offset between the central lines of the load train components. According to ASTM Standard E606, the maximum bending strains should not exceed 5 % of the minimum axial strain range imposed during any test program. For this study, the minimum axial strain range was 0.0030 in/in, which was used in the run-out fatigue test. Therefore, the maximum allowable bending strain was 150 microstrain. ASTM Standard E1012, Type A, Method 1 was followed to verify specimen alignment [3]. For this procedure, two arrays of four strain gages per array were arranged at the upper and lower ends of the uniform gage section. For each array, gages were equally spaced around the circumference of a 0.25-in. diameter specimen with uniform gage section. The maximum bending strain determined from the gaged specimen (using static load ± 1.34 klb, which was equivalent to the load amplitude for the run-out

fatigue test) was approximately 23 microstrain. This value was well within the allowable ASTM limit.

1.3 Test Methods and Procedures

1.3.1 Monotonic tension tests

All monotonic tests in this study were performed using test methods specified by ASTM Standard E8 [4]. Two specimens were used to obtain the monotonic properties. Due to the limitations of the extensometer, strain control was used only up to 14% strain. After this point, displacement control was used until fracture. By utilizing LabVIEW software, a load versus strain plot was obtained for each test.

For the elastic and initial yield region (0% to 0.5% strain), a strain rate of 0.0025 in/in/min was chosen. This strain rate was three-quarters of the maximum allowable rate specified by ASTM Standard E8 for the initial yield region. After yielding (0.5% to 14% strain), the strain rate was increased by a factor of three (i.e., 0.0075 in/in/min). After the extensometer was removed, a displacement rate of 0.01275 in/min was used. This displacement rate provided approximately the same strain rate as that used prior to switching control modes.

After the tension tests were concluded, the broken specimens were carefully reassembled. The final gage lengths of the fractured specimens were measured with a Vernier caliper having divisions of 0.001 in. Using an optical comparator with 10X magnification and divisions of 0.001 in, the final diameter and the neck radius were

measured. It should be noted that prior to the test, the initial minimum diameter was measured with this same instrument.

1.3.2 Constant amplitude fatigue tests

All constant amplitude fatigue tests in this study were performed according to ASTM Standard E606. It is recommended by this standard that at least 10 specimens be used to generate the fatigue properties. For this study, 19 specimens at 6 different strain amplitudes ranging from 0.15% to 2% were utilized. LabVIEW software was used to record the hysteresis loops.

There were two control modes used for these tests. Strain control was used in all tests, except the run-out tests. For the run-out tests (greater than 10^6 cycles), strain control was used initially to determine the stabilized load. Then stress control was used for the remainder of the test. The reason for the change in control mode was due to limitations on the extensometer. For the strain control tests, the applied frequencies ranged from 0.25 Hz to 3Hz in order to keep a strain rate about 0.02 in/in/sec. For the stress control tests, the frequency was increased to 30 Hz in order to shorten the overall test duration. All tests were conducted using a triangular waveform.

II. EXPERIMENTAL RESULTS AND ANALYSIS

2.1 Microstructural Data

Photomicrographs for the ASTM grain size number were obtained using SEM. It was observed that the grains in the transverse and longitudinal directions had negligible difference. In Figures 2a and 2b, the transverse (T-T') and longitudinal (L-T') directions are shown at 1500X magnification respectively. It seems from these photomicrographs that SAE 1045 Quenched & Tempered steel has a very fine grain size structure of ferrite and martensite. The spheroidal carbide particles could also be seen in both transverse and longitudinal directions. Photomicrographs for the inclusions were obtained using an optical microscope with a Nikon camera attachment. In Figure 3, the inclusions in the longitudinal direction is shown at 100X magnification. For Figures 2 and 3, the rolling direction is horizontal to the page.

The average grain size was measured in both transverse and longitudinal directions using the Heyn Lineal Intercept Procedure reported in ASTM Standard E112 [5]. According to ASTM Standard E45, method A, the inclusion rating numbers for the type A inclusion of thin series and the type D inclusion of oversized series were found [6]. Brinell and Rockwell hardness tests were also performed. A summary of the microstructural data for SAE 1045 Quenched & Tempered steel is provided in Table 2.

2.2 Monotonic Deformation Behavior

The properties determined from monotonic tests were the following: modulus of elasticity (E), yield strength (YS), upper yield strength (UYS), lower yield strength (LYS), yield point elongation (YPE), ultimate tensile strength (S_u), percent elongation (%EL), percent reduction in area (%RA), true fracture strength (σ_f), true fracture ductility (ϵ_f), strength coefficient (K), and strain hardening exponent (n).

True stress (σ), true strain (ϵ), and true plastic strain (ϵ_p) were calculated from engineering stress (S) and engineering strain (e), according to the following relationships which are based on constant volume assumption:

$$\sigma = S(1 + e) \quad (1a)$$

$$\epsilon = \ln(1 + e) \quad (1b)$$

$$\epsilon_p = \epsilon - \epsilon_e = \epsilon - \frac{\sigma}{E} \quad (1c)$$

The true stress (σ) - true strain (ϵ) plot is often represented by the Ramberg-Osgood equation:

$$\epsilon = \epsilon_e + \epsilon_p = \frac{\sigma}{E} + \left(\frac{\sigma}{K} \right)^{\frac{1}{n}} \quad (2)$$

The strength coefficient, K, and strain hardening exponent, n, are the intercept and slope of the best line fit to true stress (σ) versus true plastic strain (ϵ_p) data in log-log scale:

$$\sigma = K (\epsilon_p)^n \quad (3)$$

In accordance with ASTM Standard E739 [7], when performing the least squares fit, the true plastic strain (ϵ_p) was the independent variable and the stress (σ) was the dependent variable. These plots for the two tests conducted are shown in Figure 4. To generate the K and n values, the range of data used in this figure was chosen according to the definition of discontinuous yielding specified in ASTM Standard E646 [8]. Therefore, the valid data range occurred between the end of yield point extension and the strain at or prior to maximum load.

The true fracture strength, σ_f , was corrected for necking according to the Bridgman correction factor [9]:

$$\sigma_f = \frac{\frac{P_f}{A_f}}{\left[1 + \frac{4R}{D_f}\right] \ln \left[1 + \frac{D_f}{4R}\right]} \quad (4)$$

where P_f is the load at fracture, R is the neck radius, and D_f is the diameter at fracture.

The true fracture ductility, ϵ_f , was calculated from the relationship based on constant volume:

$$\epsilon_f = \ln \left(\frac{A_o}{A_f} \right) = \ln \left(\frac{1}{1 - RA} \right) \quad (5)$$

where A_f is the cross-sectional area at fracture, A_o is the original cross-sectional area, and RA is the reduction in area.

A summary of the monotonic properties for SAE 1045 Quenched & Tempered steel is provided in Table 2. The monotonic stress-strain curves are shown in Figure 5. As

can be seen from this figure, the two curves are very close to each other. Refer to Table A.1 in the Appendix for a summary of the monotonic test results.

2.3 Cyclic Deformation Behavior

2.3.1 Transient cyclic response

Transient cyclic response describes the process of cyclic-induced change in deformation resistance of a material. Data obtained from constant amplitude strain-controlled fatigue tests were used to determine this response. Plots of stress amplitude variation versus applied number of cycles can indicate the degree of transient cyclic softening/hardening. Also, these plots show when cyclic stabilization occurs. A composite plot of the transient cyclic response for SAE 1045 Quenched & Tempered steel is shown in Figure A.1 of the Appendix. The transient response was normalized on the rectangular plot in Figure A.1a, while a semi-log plot is shown in Figure A.1b. Even though multiple tests were conducted at each strain amplitude, data from one test at each strain amplitude tested are shown in these plots.

2.3.2 Steady-state cyclic deformation

Another cyclic behavior of interest was the steady state or stable response. Data obtained from constant amplitude strain-controlled fatigue tests were also used to determine this response. The properties determined from the steady-state hysteresis loops were the following: cyclic modulus of elasticity (E'), cyclic strength coefficient (K'),

cyclic strain hardening exponent (n'), and cyclic yield strength (YS'). Half-life (midlife) hysteresis loops and data were used to obtain the stable cyclic properties.

Similar to monotonic behavior, the cyclic true stress-strain behavior can be characterized by the Ramberg-Osgood type equation:

$$\frac{\Delta \varepsilon}{2} = \frac{\Delta \varepsilon_e}{2} + \frac{\Delta \varepsilon_p}{2} = \frac{\Delta \sigma}{2E} + \left(\frac{\Delta \sigma}{2K'} \right)^{\frac{1}{n'}} \quad (6)$$

It should be noted that in Equation 6 and the other equations that follow, E is the average modulus of elasticity that was calculated from the monotonic tests.

The cyclic strength coefficient, K' , and cyclic strain hardening exponent, n' , are the intercept and slope of the best line fit to true stress amplitude ($\Delta\sigma/2$) versus true plastic strain amplitude ($\Delta\varepsilon_p/2$) data in log-log scale:

$$\frac{\Delta \sigma}{2} = K' \left(\frac{\Delta \varepsilon_p}{2} \right)^{n'} \quad (7)$$

In accordance with ASTM Standard E739, when performing the least squares fit, the true plastic strain amplitude ($\Delta\varepsilon_p/2$) was the independent variable and the stress amplitude ($\Delta\sigma/2$) was the dependent variable. The true plastic strain amplitude was calculated by the following equation:

$$\frac{\Delta \varepsilon_p}{2} = \frac{\Delta \varepsilon}{2} - \frac{\Delta \sigma}{2E} \quad (8)$$

This plot is shown in Figure 6. To generate the K' and n' values, the range of data used in this figure was chosen for $\left[\frac{\Delta \varepsilon_p}{2} \right]_{\text{calculated}} \geq 0.0005$ in/in.

The cyclic stress - strain curve reflects the resistance of a material to cyclic deformation and can be vastly different from the monotonic stress - strain curve. The cyclic stress - strain curve is shown in Figure 7. In Figure 8, superimposed plots of monotonic and cyclic curves are shown. As can be seen in Figure 8, SAE 1045 Quenched & Tempered steel has mixed cyclic hardening behavior. Initially, this material cyclically softens, but then becomes cyclically hardened. Figure A.2 in the Appendix shows a composite plot of the steady-state (midlife) hysteresis loops. Even though multiple tests were conducted at each strain amplitude, the stable loops from only one test at each strain amplitude are shown in this plot.

2.4 Constant Amplitude Fatigue Behavior

Constant amplitude strain-controlled fatigue tests were performed to determine the strain-life curve. The following equation relates the true strain amplitude to the fatigue life:

$$\frac{\Delta\varepsilon}{2} = \frac{\Delta\varepsilon_e}{2} + \frac{\Delta\varepsilon_p}{2} = \frac{\sigma_f'}{E} (2N_f)^b + \varepsilon_f' (2N_f)^c \quad (9)$$

where σ_f' is the fatigue strength coefficient, b is the fatigue strength exponent, ε_f' is the fatigue ductility coefficient, c is the fatigue ductility exponent, E is the monotonic modulus of elasticity, and $2N_f$ is the number of reversals to failure (which was defined as a 50% load drop, as recommended by ASTM Standard E606).

The fatigue strength coefficient, σ_f' , and fatigue strength exponent, b , are the intercept and slope of the best line fit to true stress amplitude ($\Delta\sigma/2$) versus reversals to failure ($2N_f$) data in log-log scale:

$$\frac{\Delta\sigma}{2} = \sigma_f' (2N_f)^b \quad (10)$$

In accordance with ASTM Standard E739, when performing the least squares fit, the stress amplitude ($\Delta\sigma/2$) was the independent variable and the reversals to failure ($2N_f$) was the dependent variable. This plot is shown in Figure 9. To generate the σ_f' and b values, the range of data used in this figure was chosen for $N_f \leq 10^6$ cycles.

The fatigue ductility coefficient, ϵ_f' , and fatigue ductility exponent, c , are the intercept and slope of the best line fit to calculated true plastic strain amplitude ($\Delta\epsilon_p/2$) versus reversals to failure ($2N_f$) data in log-log scale:

$$\left(\frac{\Delta\epsilon_p}{2} \right)_{\text{calculated}} = \epsilon_f' (2N_f)^c \quad (11)$$

In accordance with ASTM Standard E739, when performing the least squares fit, the calculated true plastic strain amplitude ($\Delta\epsilon_p/2$) was the independent variable and the reversals to failure ($2N_f$) was the dependent variable. The calculated true plastic strain amplitude was determined from Equation 8. This plot is shown in Figure 10. To generate the ϵ_f' and c values, the range of data used in this figure was chosen for $\left[\frac{\Delta\epsilon_p}{2} \right]_{\text{calculated}} \geq$

0.0005 in/in.

The true strain amplitude versus reversals to failure plot is shown in Figure 11. This plot displays the strain - life curve (Eqn. 9), the elastic strain portion (Eqn. 10), the plastic strain portion (Eqn. 11), and superimposed fatigue data. A summary of the cyclic properties for SAE 1045 Quenched & Tempered steel is provided in Table 2. Table A.2 in the Appendix provides the summary of the fatigue test results.

Table 1: Chemical composition of SAE 1045 Quenched & Tempered steel

| <u>Element</u> | <u>Wt. %</u> |
|----------------|--------------|
| Carbon, C | 0.44% |
| Manganese, Mn | 0.73% |
| Phosphorus, P | 0.01% |
| Sulfur, S | 0.025% |
| Silicon, Si | 0.26% |
| Vanadium, V | 0.003% |
| Chromium, Cr | 0.06% |
| Aluminum, Al | 0.035% |
| Nitrogen, N | 0.008% |
| Nickel, Ni | 0.04% |
| Copper, Cu | 0.04% |
| Tin, Sn | 0.02% |
| Molybdenum, Mo | 0.01% |
| Niobium, Nb | 0.005% |
| Calcium, Ca | 0.002% |
| Zirconium, Zr | 0.005% |
| Antimony, Sb | 0.003% |
| Boron, B | 0.0001% |

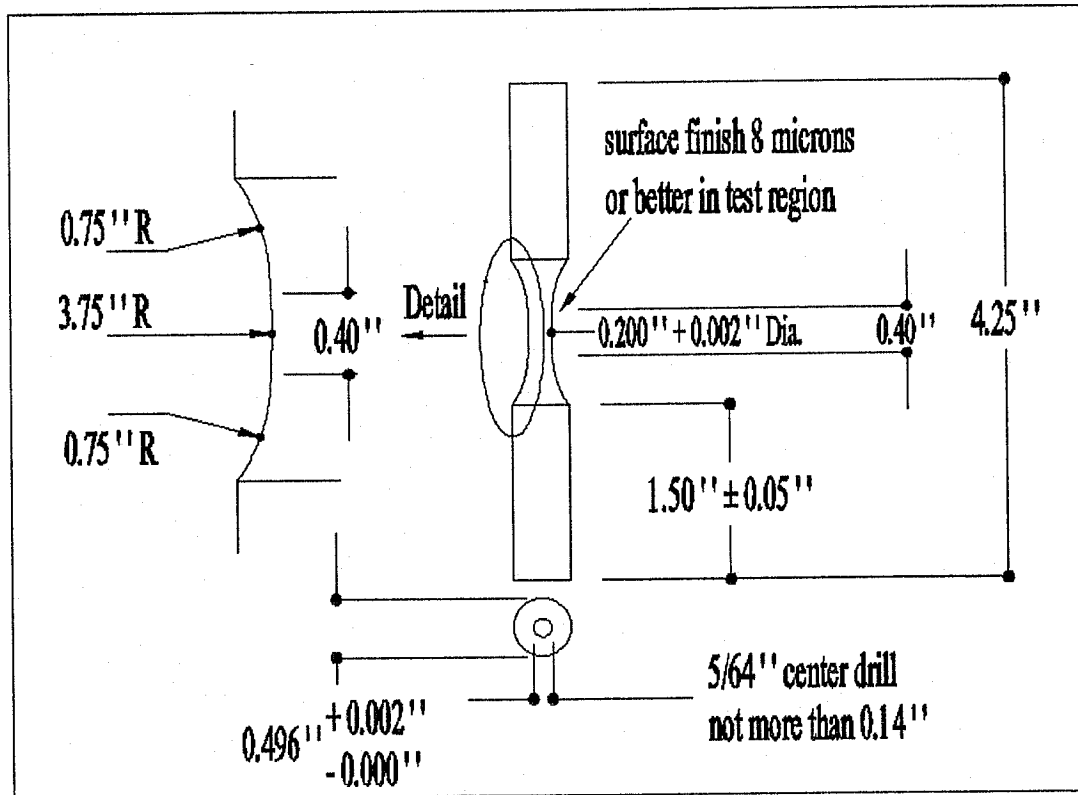


Figure 1: Specimen configuration and dimensions

Table 2: Summary of the Mechanical Properties

| Microstructural Data | Average | | |
|--|--|------------|---------------------------------------|
| ASTM grain size number (MAG=1500X): | | | |
| Transverse direction (T-T') | 0 | | |
| Longitudinal direction (L-T) | 0 | | |
| Inclusion rating number (MAG=100X): | | | |
| Type A (sulfide type), thin series | <1 | | |
| Type B (alumina type), thin & heavy series | none | | |
| Type C (silicate type), thin & heavy series | none | | |
| Type D (globular type), oversized series | 1 | | |
| Hardness: | | | |
| Brinell (HB) | | | |
| Transverse direction (T-T') | 222.1 | | |
| Longitudinal direction (L-T) | 221.2 | | |
| Rockwell B-scale (HRB) | | | |
| Transverse direction (T-T') | 95.5 | | |
| Longitudinal direction (L-T) | 93.8 | | |
| Rockwell C-scale (HRC) | | | |
| Transverse direction (T-T') | 17.2 | | |
| Longitudinal direction (L-T) | 14.2 | | |
| Microstructure type: | | | |
| Transverse direction (T-T') | ferrite/martensite with spheroidal carbide particles | | |
| Longitudinal direction (L-T) | ferrite/martensite with spheroidal carbide particles | | |
| Monotonic Properties | Average | | Range |
| Modulus of elasticity, E, GPa (ksi): | 209.3 | (30,361.7) | 207.6 - 211.1 (30,111.8 - 30,611.6) |
| Yield strength (0.2% offset), YS, MPa (ksi): | 509.6 | (73.9) | 502.0 - 517.2 (72.8 - 75.0) |
| Upper yield strength UYS, MPa (ksi): | 537.3 | (77.9) | 530.5 - 544.1 (76.9 - 78.9) |
| Lower yield strength LYS, MPa (ksi): | 506.9 | (73.5) | 499.5 - 514.3 (72.5 - 74.6) |
| Yield point elongation, YPE (%) | 0.29% | | 0.27% - 0.31% |
| Ultimate strength, S _u , MPa (ksi): | 746.6 | (108.3) | 744.6 - 748.5 (108.0 - 108.6) |
| Percent elongation, %EL (%) | 35.5% | | 33.0% - 38.0% |
| Percent reduction in area, %RA (%) | 62.0% | | 61.8% - 62.2% |
| Strength coefficient, K, MPa (ksi): | 1,334.2 | (193.5) | 1,333.9 - 1,334.5 (193.5 - 193.5) |
| Strain hardening exponent, n: | 0.1985 | | 0.1957 - 0.2013 |
| True fracture strength, σ _f *, MPa (ksi): | 1150.8 | (166.9) | 1125.8 - 1175.9 (163.3 - 170.5) |
| True fracture ductility, ε _f (%) | 96.7% | | 96% - 97% |
| Cyclic Properties | Average | | Range |
| Cyclic modulus of elasticity, E', GPa (ksi): | 204.6 | (29,668.6) | 190.3 - 217.6 (27,604.0) - (31,047.4) |
| Fatigue strength coefficient, σ _f ', MPa (ksi): | 1,346.0 | (195.2) | |
| Fatigue strength exponent, b: | -0.1086 | | |
| Fatigue ductility coefficient, ε _f ' : | 1.1742 | | |
| Fatigue ductility exponent, c: | -0.6192 | | |
| Cyclic yield strength, YS', MPa (ksi) | 440.2 | (63.8) | |
| Cyclic strength coefficient, K', MPa (ksi): | 1,301.7 | (188.8) | |
| Cyclic strain hardening exponent, n': | 0.1744 | | |

* Correction was made according to the Bridgman correction factor.

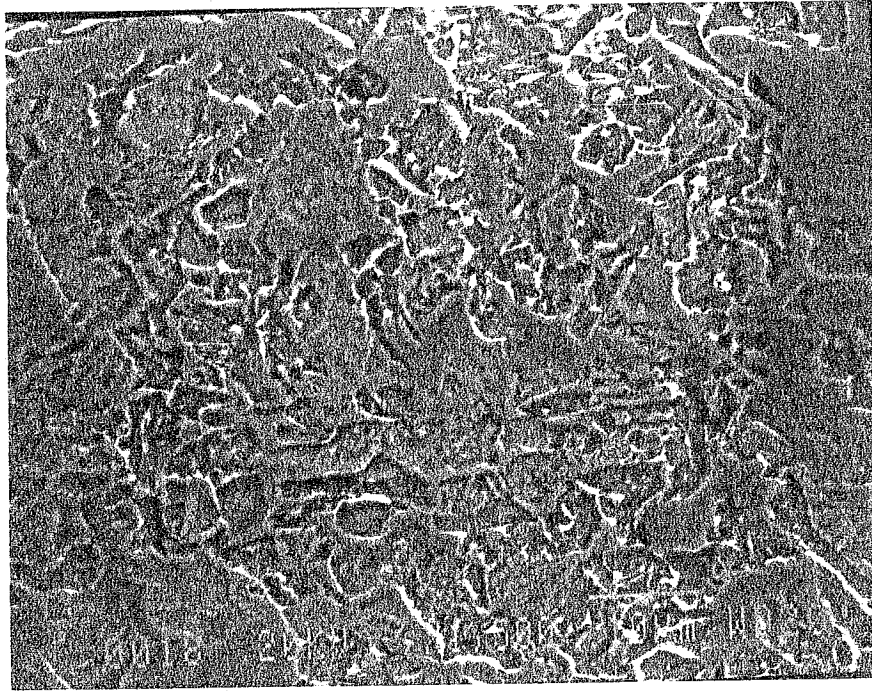


Figure 2a: Photomicrograph in the transverse direction (T-T') at 1500X for SAE 1045 Quenched & Tempered steel

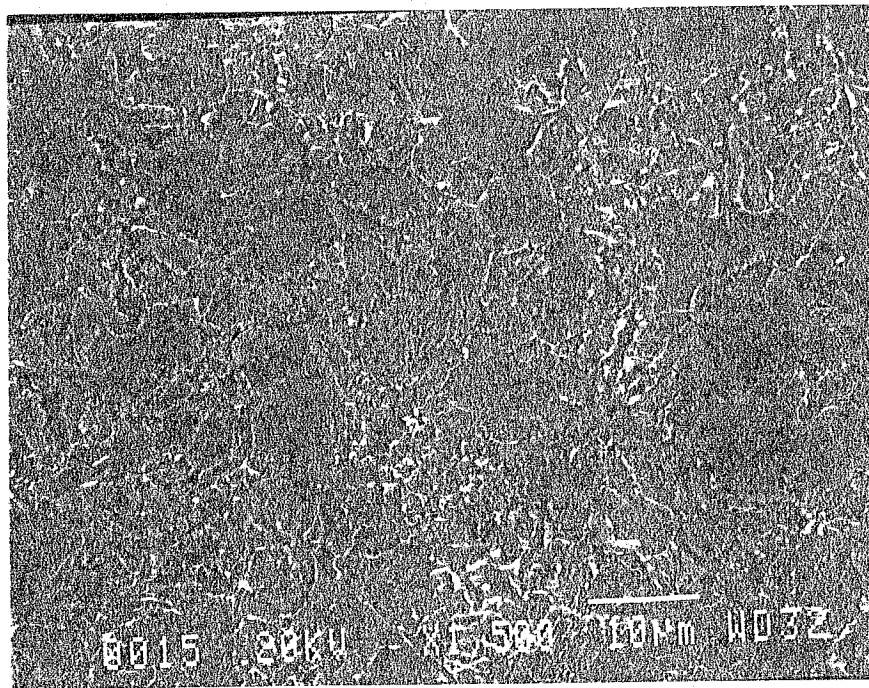


Figure 2b: Photomicrograph in the longitudinal direction (L-T') at 1500X for SAE 1045 Quenched & Tempered steel (rolling direction is horizontal)

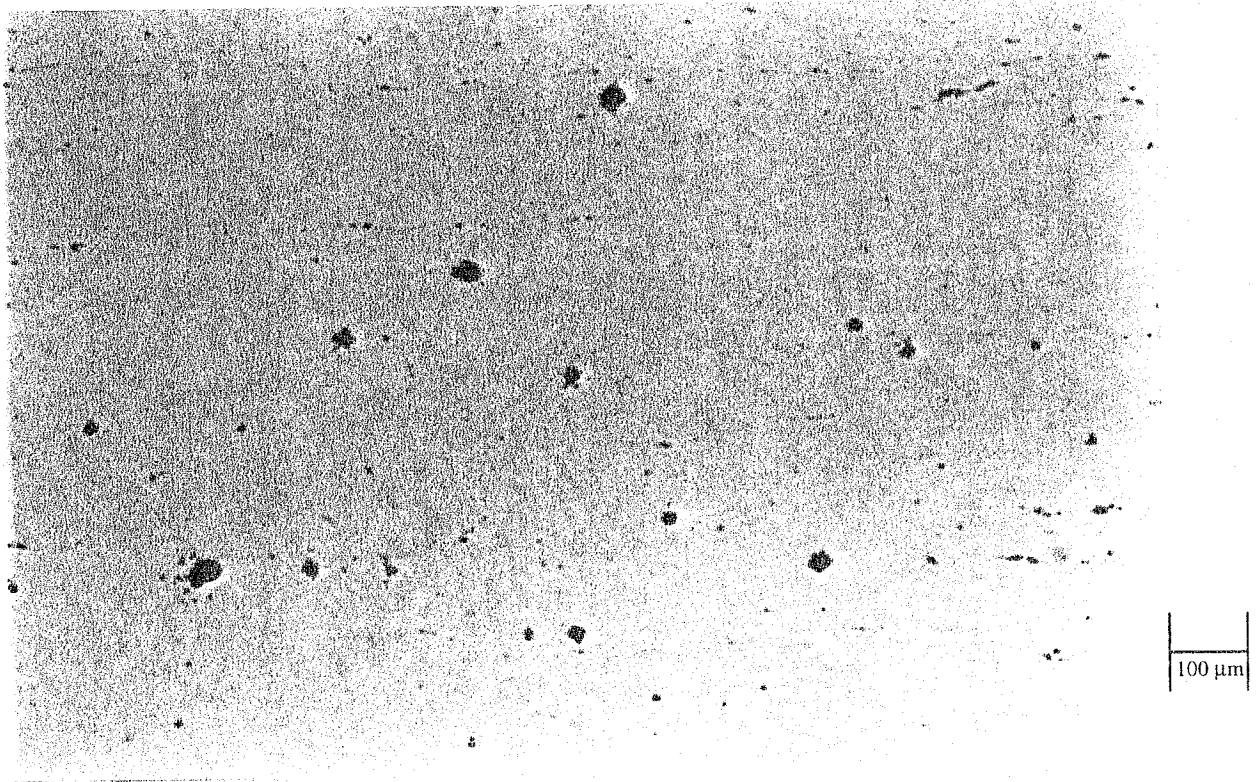


Figure 3: Examples of inclusions in the longitudinal direction (L-T) at 100X for SAE 1045 Quenched & Tempered steel (rolling direction is horizontal)

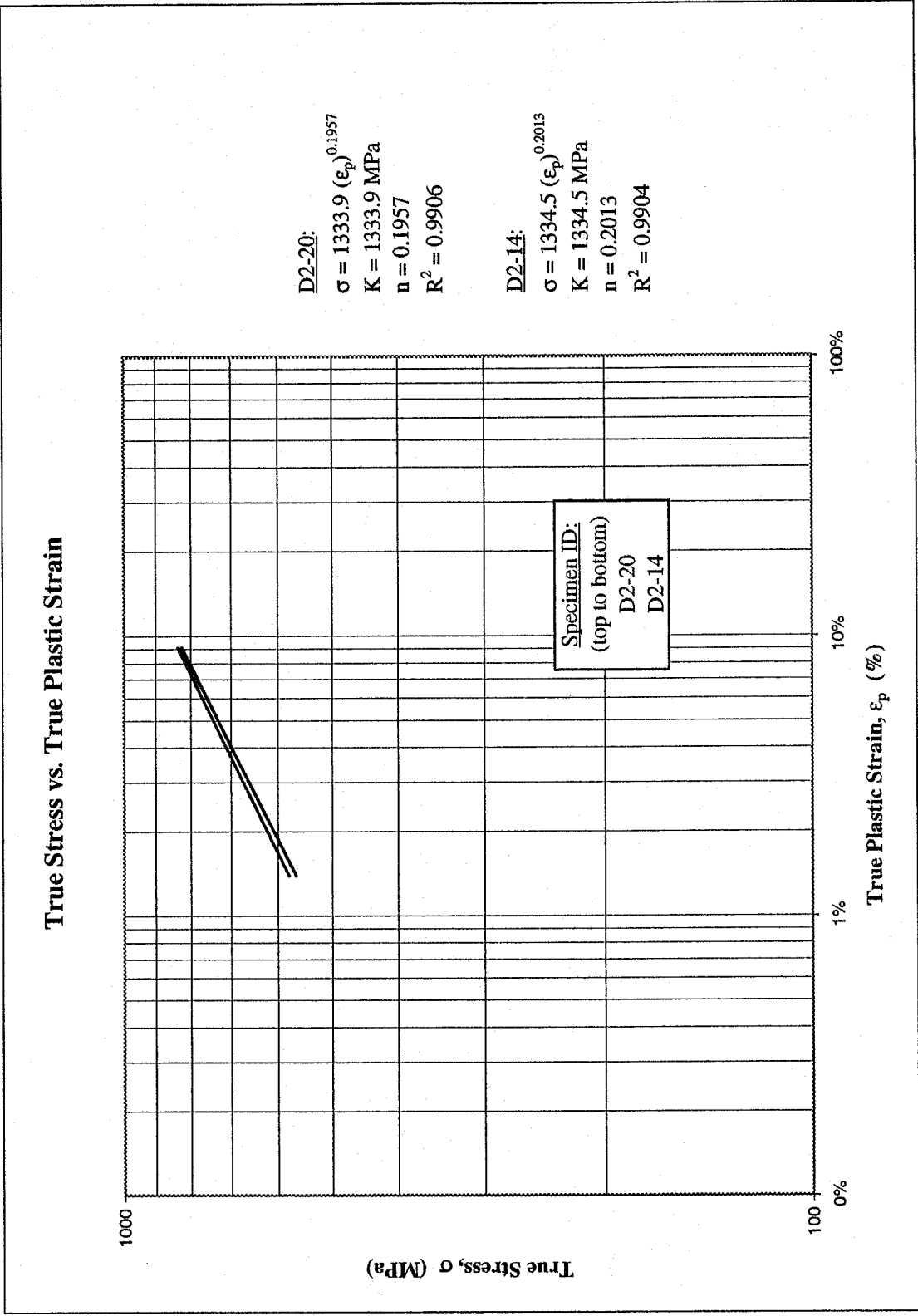


Figure 4: True stress versus true plastic strain

Engineering Stress vs. Engineering Strain

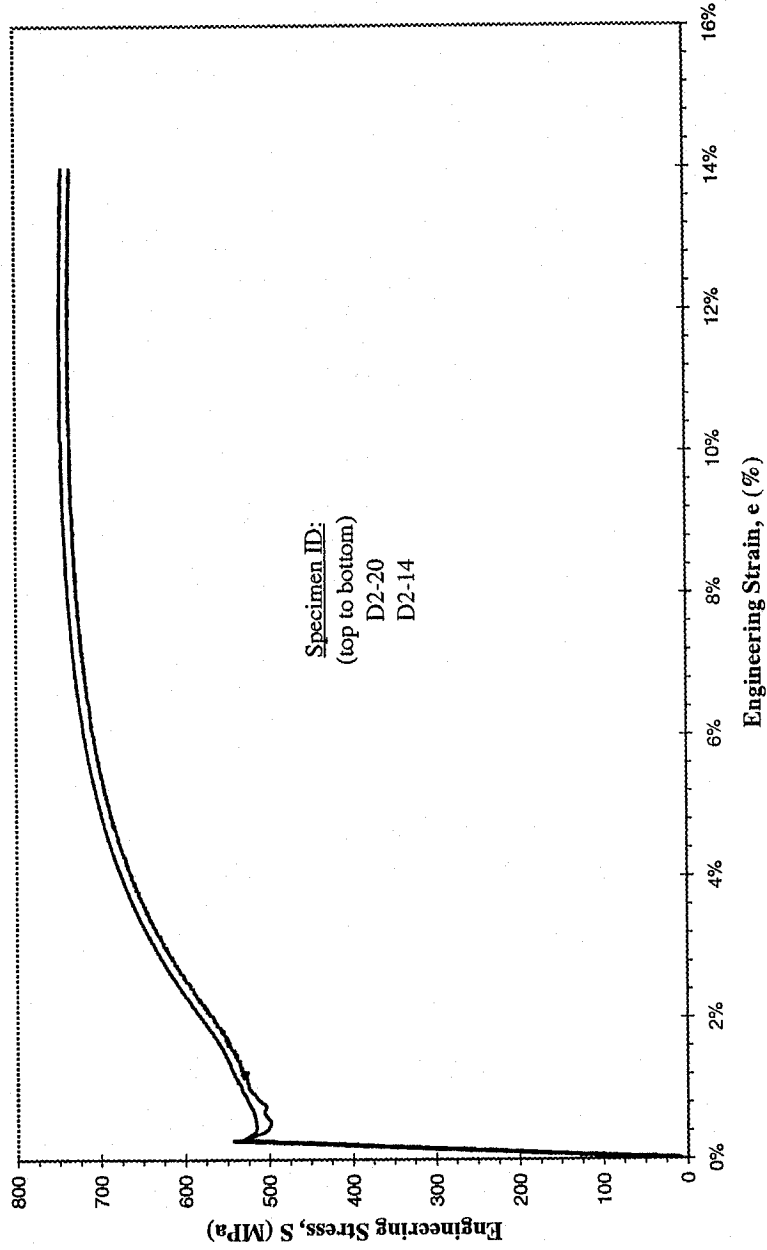


Figure 5: Monotonic stress-strain curve

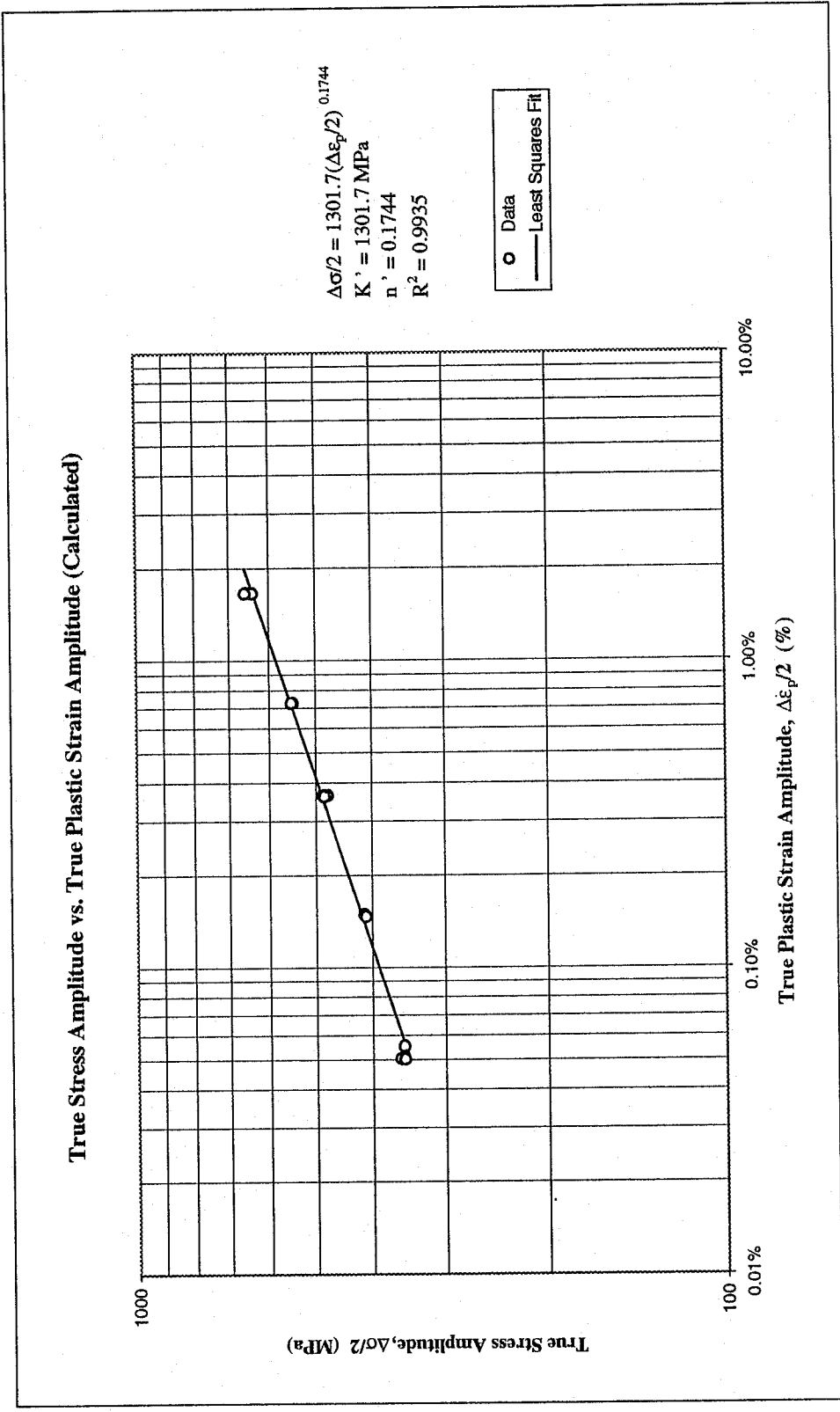


Figure 6: True stress amplitude versus calculated true plastic strain amplitude

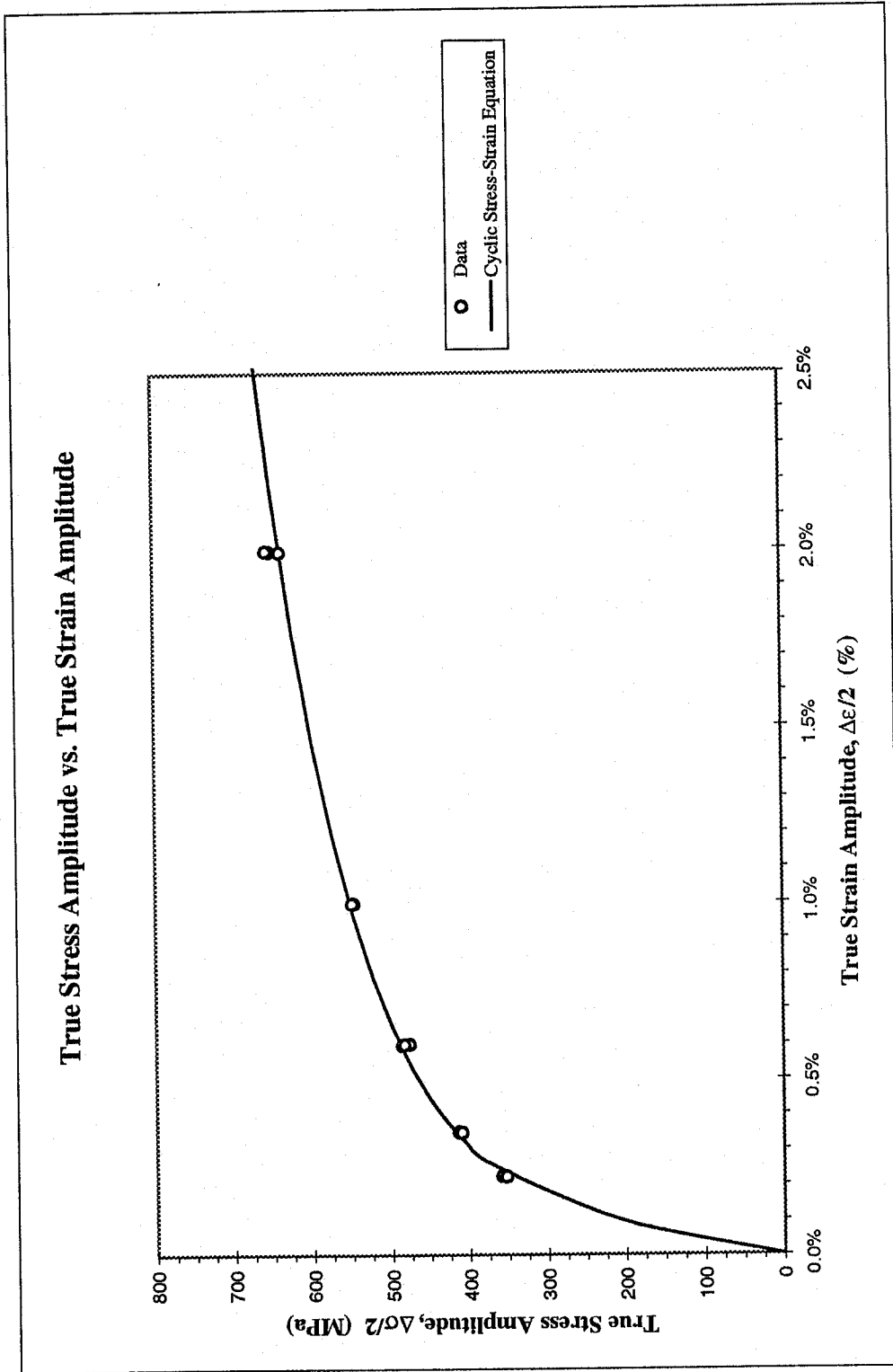


Figure 7: True stress amplitude versus true strain amplitude

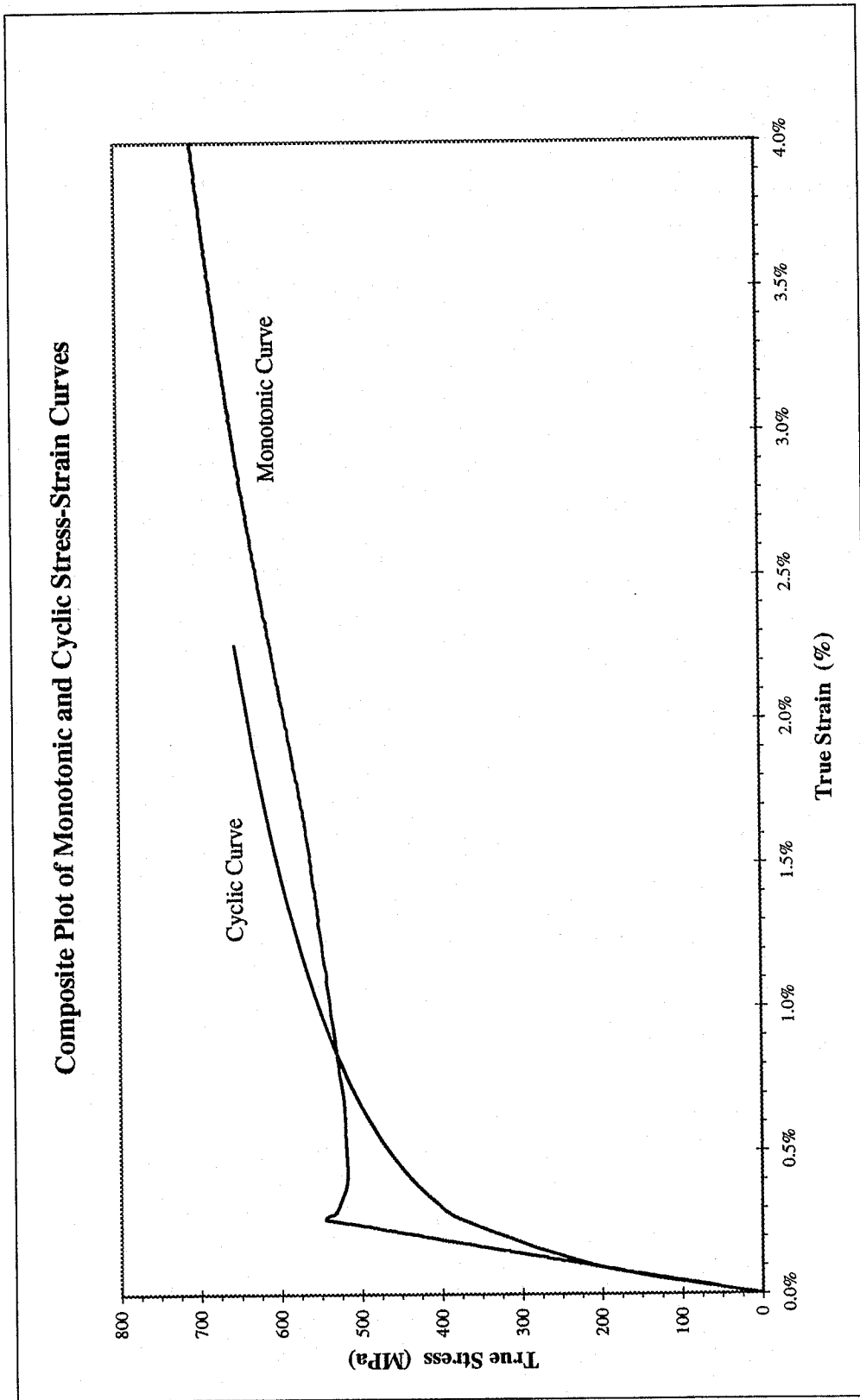


Figure 8: Composite plot of cyclic and monotonic stress-strain curves

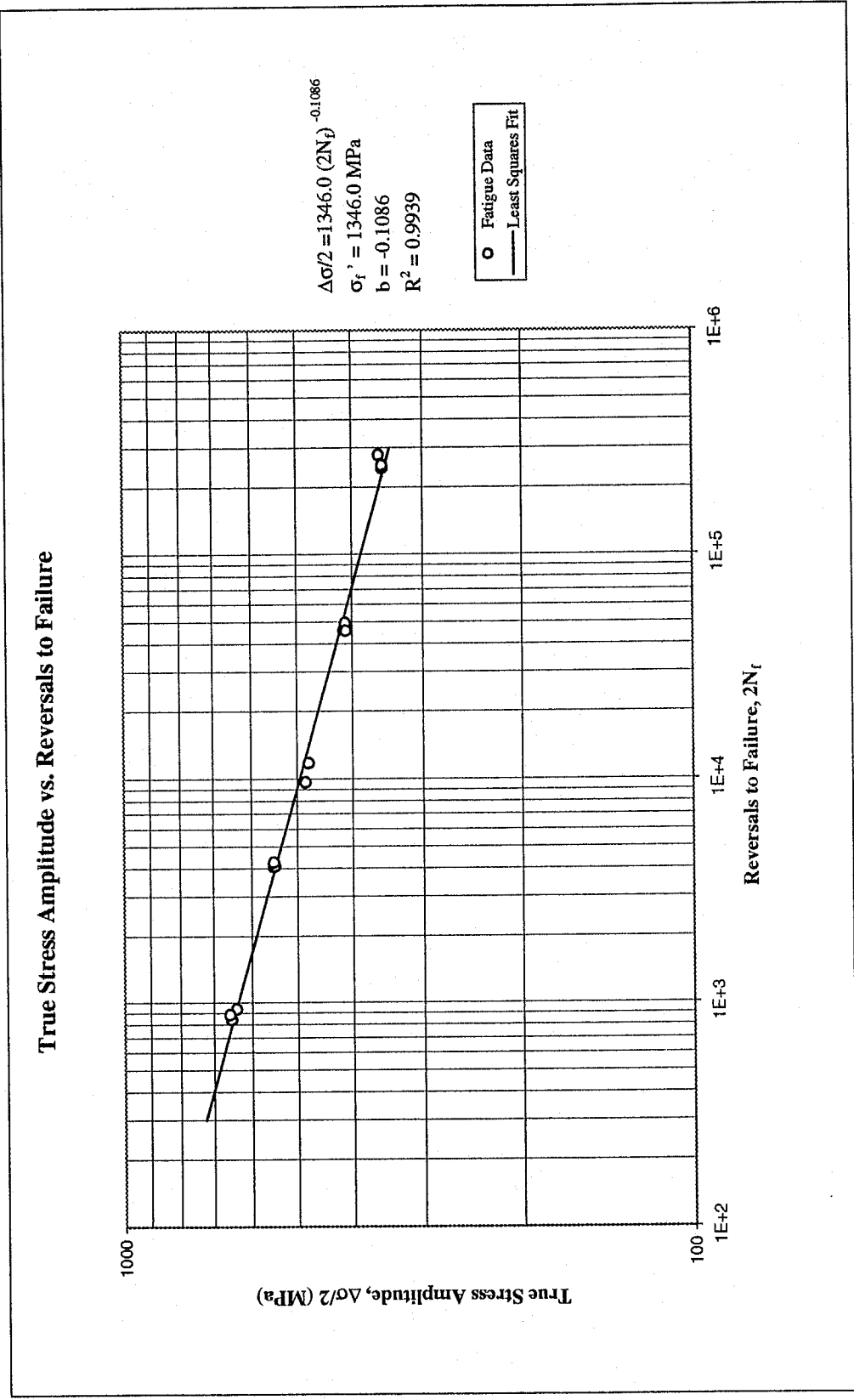


Figure 9: True stress amplitude versus reversals to failure

True Plastic Strain Amplitude (Calculated) vs. Reversals to Failure

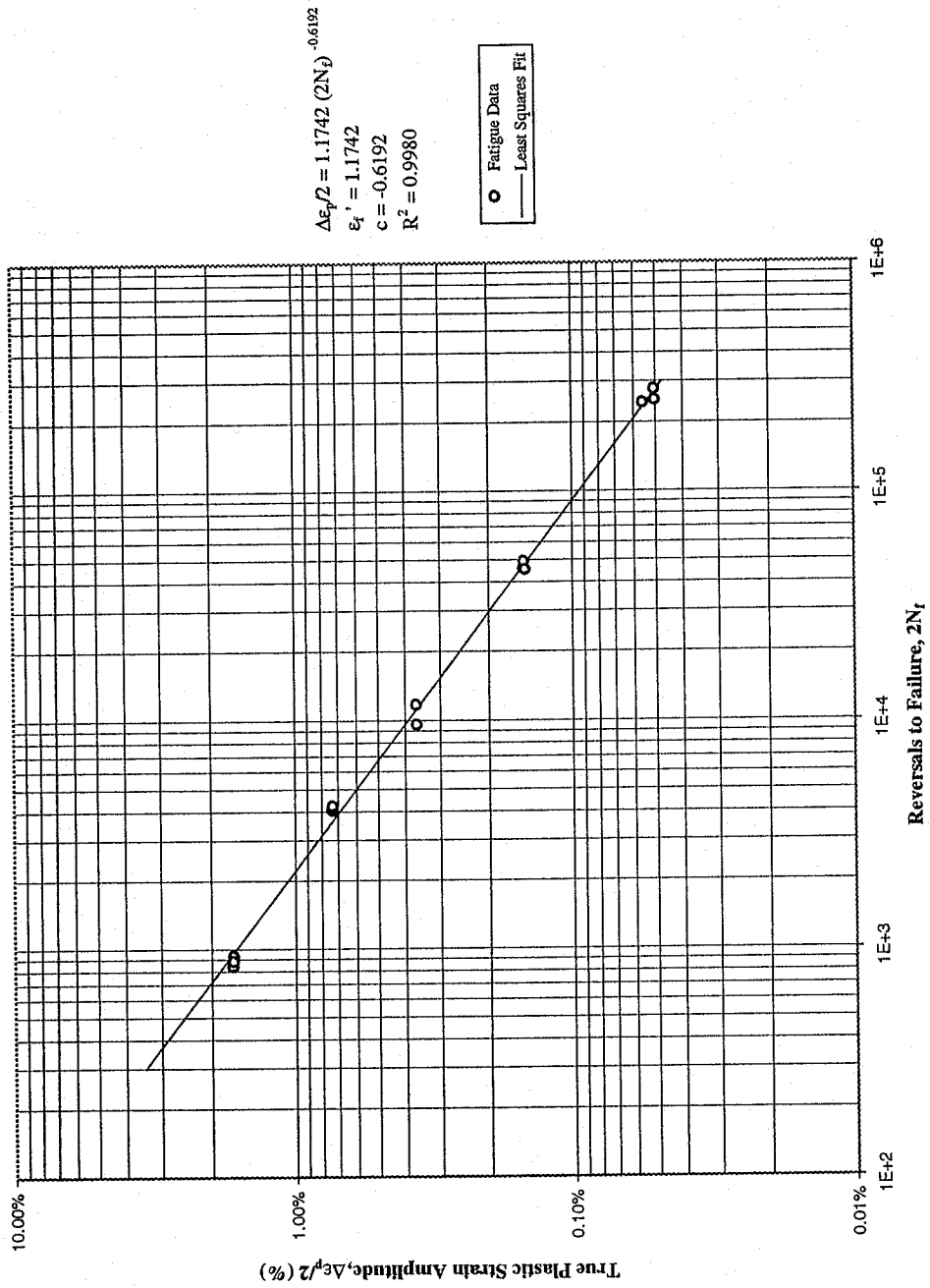


Figure 10: Calculated true plastic strain amplitude versus reversals to failure

True Strain Amplitude vs. Reversals to Failure

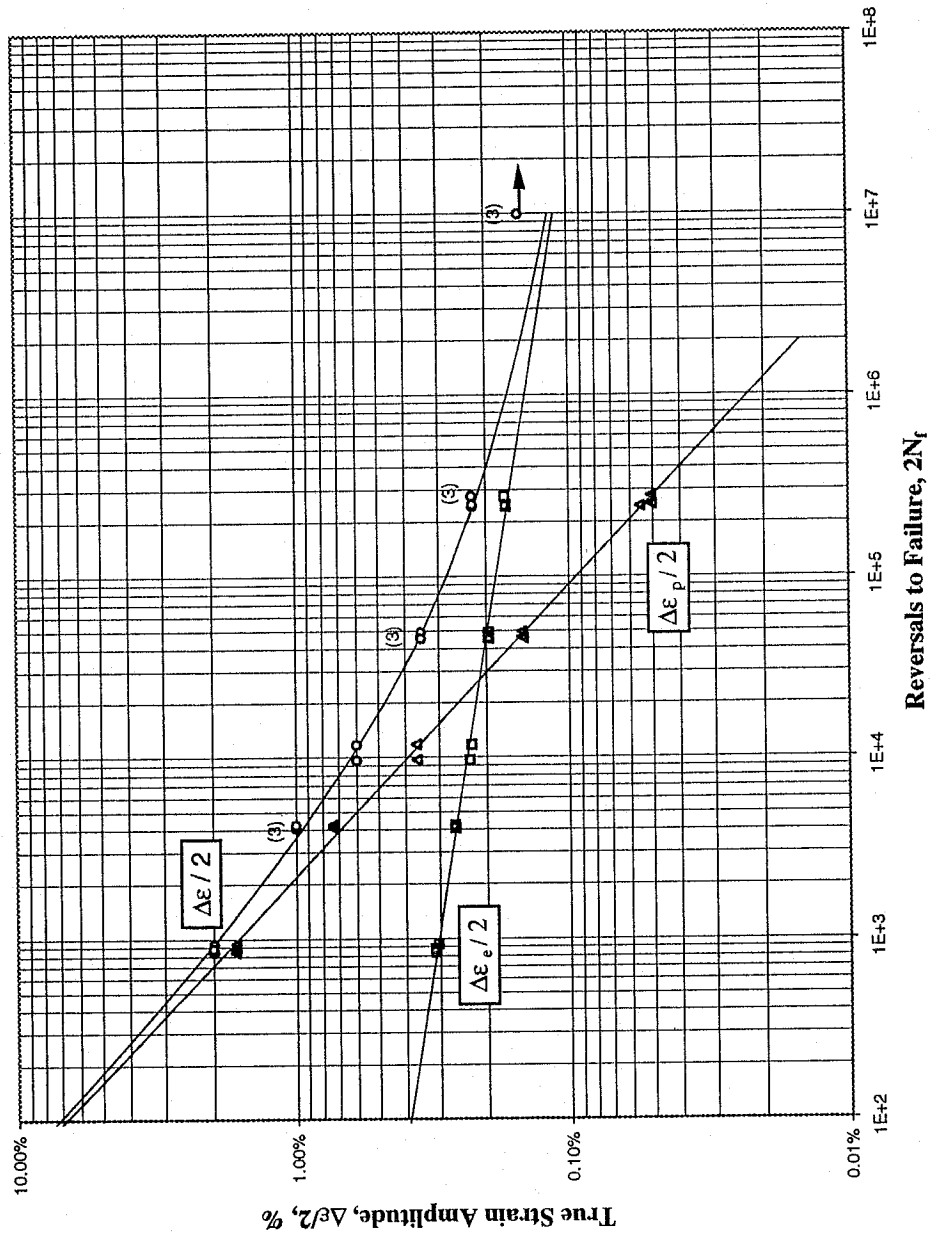


Figure 11: True strain amplitude versus reversals to failure

REFERENCES

- [1] ASTM Standard E606-92, "Standard Practice for Strain-Controlled Fatigue Testing," Annual Book of ASTM Standards, Vol. 03.01, 1997, pp. 523-537.
- [2] ASTM Standard E83-96, "Standard Practice for Verification and Classification of Extensometers," Annual Book of ASTM Standards, Vol. 03.01, 1997, pp. 198-206.
- [3] ASTM Standard E1012-93a, "Standard Practice for Verification of Specimen Alignment Under Tensile Loading," Annual Book of ASTM Standards, Vol. 03.01, 1997, pp. 699-706.
- [4] ASTM Standard E8-96a, "Standard Test Methods for Tension Testing of Metallic Materials," Annual Book of ASTM Standards, Vol. 03.01, 1997, pp. 56-76.
- [5] ASTM Standard E112-96, "Standard Test Methods for Determining Average Grain Size," Annual Book of ASTM Standards, Vol. 03.01, 1997, pp. 227-249.
- [6] ASTM Standard E45-97, "Standard Test Methods for Determining the Inclusion Content of Steel," Annual Book of ASTM Standards, Vol. 03.01, 1997, pp. 157-170.
- [7] ASTM Standard E739-91, "Standard Practice for Statistical Analysis of Linear or Linearized Stress-Life (S-N) and Strain-Life (ϵ -N) Fatigue Data," Annual Book of ASTM Standards, Vol. 03.01, 1995, pp. 615-621.
- [8] ASTM Standard E646-93, "Standard Test Method for Tensile Strain-Hardening Exponents (n-values) of Metallic Sheet Materials," Annual Book of ASTM Standards, Vol. 03.01, 1997, pp. 550-556.
- [9] Bridgman, P. W., "Stress Distribution at the Neck of Tension Specimen," *Transactions of American Society for Metals*, Vol. 32, 1944, pp. 553-572.

APPENDIX

Table A.1: Summary of monotonic tensile test results

| Specimen ID | D ₀ , mm (in.) | D _f , mm (in.) | L ₀ , mm (in.) | L _f , mm (in.) | E, GPa (ksi) | YS (offset=0.2%), MPa (ksi) | UYS, MPa (ksi) | LYS, MPa (ksi) | YPE, % | S _{0.2} , MPa (ksi) | K, MPa (ksi) | n | %EL, % | %RA, % | R, mm (in.) | σ _f [*] , MPa (ksi) | ε _f |
|-------------------|------------------------------|------------------------------|------------------------------|------------------------------|---------------------|-----------------------------------|-------------------|----------------------|--------|---------------------------------|--------------------|--------|-----------|-----------|-----------------|--|----------------|
| D2-14 | 5.22 (0.206) | 3.21 (0.126) | 7.62 (0.30) | 10.52 (0.41) | 207.6 (30,111.8) | 502.0 (72.8) | 530.5 (76.9) | 499.5 (72.5) | 0.27% | 744.6 (108.0) | 1,334.5 (193.5) | 0.2013 | 38% | 62.2% | 1.66 (0.065) | 1125.8 (163.3) | 97.2% |
| D2-20 | 5.23 (0.206) | 3.23 (0.127) | 7.62 (0.30) | 10.13 (0.40) | 211.1 (30,611.6) | 517.2 (75.0) | 544.1 (78.9) | 514.3 (74.6) | 0.31% | 748.5 (108.6) | 1,333.9 (193.5) | 0.1957 | 33% | 61.8% | 1.89 (0.074) | 1175.9 (170.5) | 96.3% |
| Average values | | | | | 209.3 (30,361.7) | 509.6 (73.9) | 537.3 (77.9) | 506.9 (73.5) | 0.29% | 746.6 (108.3) | 1,334.2 (193.5) | 0.1985 | 36% | 62.0% | | 1150.8 (166.9) | 96.7% |

* The values of true fracture strength are corrected for necking according to the Bridgman correction factor

Table A.2: Summary of constant amplitude completely reversed fatigue test results

| Specimen ID | Test control mode | Test freq., Hz | E, GPa (ksi) | At midlife ($N_{50\%}$) | | | | | | $2N_{50\%}$, ^[b] reversals | $(2N_f)_{10\%}$, ^[c] reversals | $(2N_f)_{50\%}$, ^[d] reversals | Failure location ^[e] |
|-------------|-------------------|----------------|---------------------|---------------------------|------------------------|---|------------------------------------|------------------------------|------------------------|--|--|--|---------------------------------|
| | | | | E', GPa (ksi) | $\Delta\epsilon/2$, % | $\Delta\epsilon_p/2$ ^[a] (calculated), % | $\Delta\epsilon_p/2$ (measured), % | $\Delta\sigma/2$, MPa (ksi) | σ_m , MPa (ksi) | | | | |
| D2-15 | strain | 0.25 | 202.0 (29,293.1) | 191.4 (27,760.6) | 1.997% | 1.674% | 1.635% | 650.9 (94.4) | -3.4 (-0.5) | 400 | 800 | 846 | IGL |
| D2-17 | strain | 0.25 | 194.4 (28,195.0) | 195.0 (28,281.6) | 1.996% | 1.668% | 1.634% | 638.3 (92.6) | -6.5 (-0.9) | 440 | 920 | 940 | IGL |
| D2-18 | strain | 0.25 | 196.3 (28,467.2) | 196.4 (28,482.6) | 1.999% | 1.665% | 1.531% | 655.6 (95.1) | -3.4 (-0.5) | 460 | 836 | 890 | IGL |
| D2-16 | strain | 0.5 | 203.8 (29,561.6) | 209.2 (30,347.5) | 0.998% | 0.729% | 0.710% | 548.5 (79.6) | -3.7 (-0.5) | 1,800 | 3,880 | 4,080 | IGL |
| D2-19 | strain | 0.5 | 205.3 (29,782.1) | 190.3 (27,604.0) | 0.999% | 0.732% | 0.706% | 547.0 (79.3) | -2.0 (-0.3) | 2,000 | 4,020 | 4,100 | IGL |
| D2-24 | strain | 0.50 | 206.2 (29,907.8) | 201.7 (29,260.3) | 0.998% | 0.732% | 0.704% | 549.3 (79.7) | -1.3 (-0.2) | 2,000 | 4,016 | 4,260 | IGL |
| D2-22 | strain | 0.84 | 203.3 (29,489.1) | 197.9 (28,697.4) | 0.600% | 0.365% | 0.350% | 476.5 (69.1) | -1.1 (-0.2) | 4,400 | 11,400 | 11,820 | IGL |
| D2-11 | strain | 0.84 | 210.5 (30,526.3) | 207.8 (30,144.1) | 0.597% | 0.366% | 0.348% | 486.2 (70.5) | 1.4 (0.2) | 4,000 | 7,920 | 7,972 | AKP |
| D2-6 | strain | 0.8 | 205.5 (29,802.2) | 205.7 (29,835.7) | 0.598% | 0.363% | 0.350% | 483.4 (70.1) | -9.3 (-1.4) | 5,000 | 9,540 | 9,700 | IGL |
| D2-5 | strain | 2.0 | 206.8 (29,998.0) | 211.1 (30,620.2) | 0.349% | 0.149% | 0.137% | 413.1 (59.9) | 1.5 (0.2) | 24,000 | 45,340 | 46,400 | IGL |
| D2-3 | strain | 2.0 | 205.8 (29,845.2) | 205.0 (29,726.6) | 0.348% | 0.149% | 0.136% | 410.8 (72.6) | 2.1 (1.4) | 24,000 | 49,200 | 49,780 | IGL |
| D2-25 | strain | 2.0 | 204.0 (29,580.6) | 202.3 (29,343.3) | 0.348% | 0.147% | 0.138% | 409.8 (59.4) | 3.7 (0.5) | 24,000 | 43,340 | 45,960 | IGL |
| D2-7 | strain | 3.0 | 205.9 (29,855.3) | 212.6 (30,829.7) | 0.225% | 0.051% | 0.055% | 357.8 (51.9) | 16.4 (2.4) | 146,000 | 278,000 | 279,200 | IGL |
| D2-21 | strain | 3.0 | 209.5 (30,384.3) | 214.1 (31,047.4) | 0.224% | 0.055% | 0.049% | 353.0 (51.2) | 22.8 (3.3) | 132,000 | 235,600 | 244,700 | IGL |
| D2-9 | strain | 3.0 | 203.4 (29,500.2) | 214.9 (31,165.1) | 0.224% | 0.050% | 0.049% | 352.6 (51.1) | 5.9 (0.9) | 120,000 | 239,700 | 250,800 | IGL |
| D2-2 | Load | 30 | | | 0.150% | | | 287.6 (41.7) | 0.0 (0.0) | -- | -- | -- | No Failure |
| D2-8 | Load | 30 | | | 0.150% | | | 287.6 (41.7) | 0.0 (0.0) | -- | -- | -- | No Failure |
| D2-1 | Load | 30 | | | 0.150% | | | 287.9 (41.8) | 0.0 (0.0) | -- | -- | -- | No Failure |
| D2-4 | strain Load | 3 30.0 | 203.1 (29,456.8) | (217.6) (31,551.9) | 0.149% | | | 288.0 (41.8) | 38.0 (5.5) | 46,000 | -- | -- | Overload ^[f] |

[a] $\Delta\epsilon_p/2_{(calculated)} = \Delta\epsilon/2 - \Delta\sigma/2E$.

[b] $N_{50\%}$ is defined as the midlife cycle (for run-out tests, data is taken from the stable cycle indicated).

[c] $(N_f)_{10\%}$ is defined as 10% load drop.

[d] $(N_f)_{50\%}$ is defined as 50% load drop.

[e] IGL = inside gage length; AKP = at knife point; OGIT = outside gage length but inside test section

[f] Overload happened during the load control period

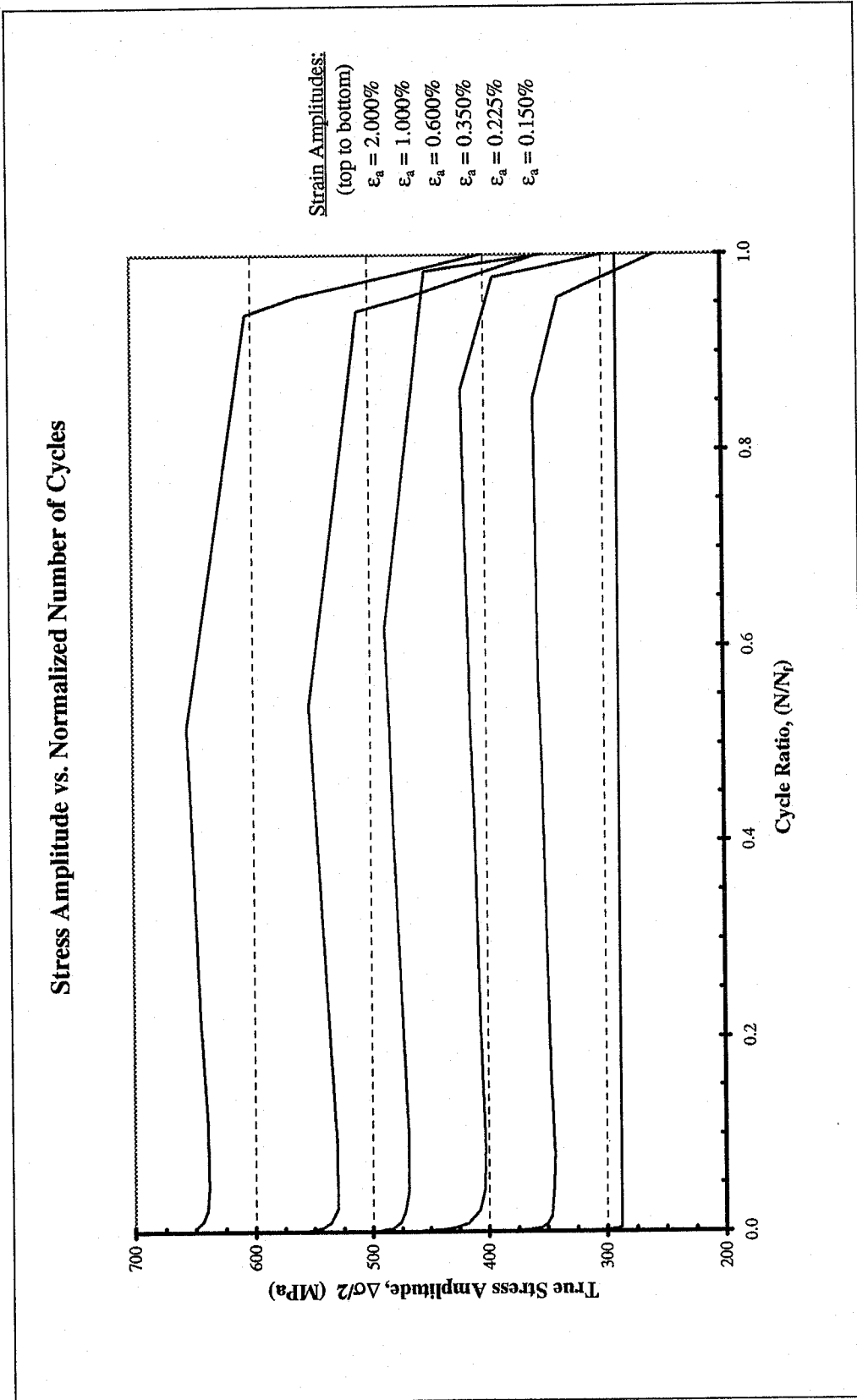


Figure A.1a: True stress amplitude versus normalized number of cycles

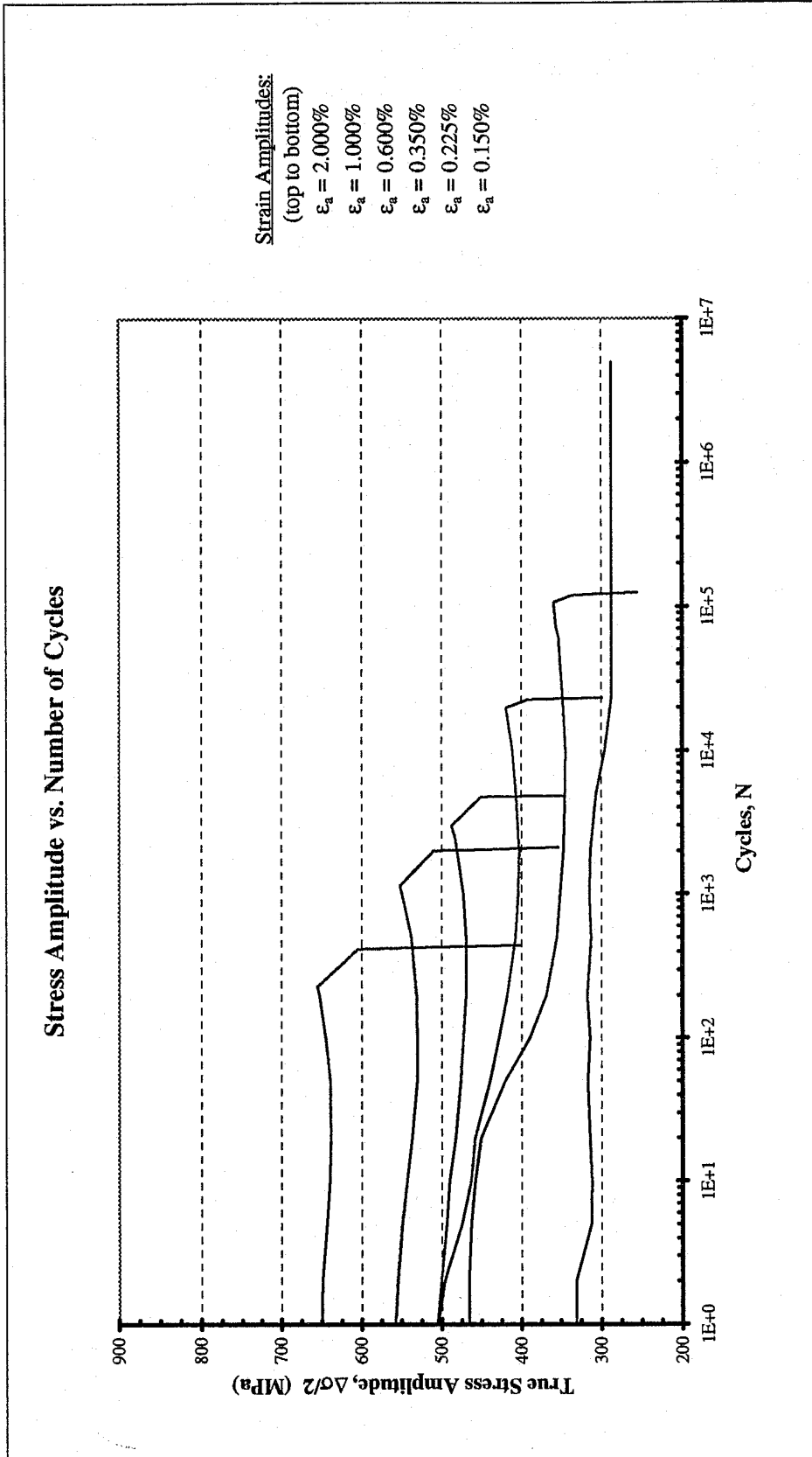


Figure A.1b: True stress amplitude versus number of cycles

Composite Plot of Midlife Hysteresis Loops



Strain Amplitudes:
(starting on outside)

- $\epsilon_a = 2.000\%$
- $\epsilon_a = 1.000\%$
- $\epsilon_a = 0.600\%$
- $\epsilon_a = 0.350\%$
- $\epsilon_a = 0.225\%$
- $\epsilon_a = 0.150\%$

Figure A.2: Composite plot of midlife hysteresis loops