

AISI 1541 Steel Iteration #1

Fatigue Behavior, Monotonic Properties and Microstructural Data

Prepared by:

A. Varvani-Farahani, A. Dabayeh
and
T.H. Topper

Department of Civil Engineering
University of Waterloo
Waterloo, Ontario Canada

Prepared for:

The AISI Bar Steel Applications Group

September 1998



American Iron and Steel Institute
2000 Town Center, Suite 320
Southfield, Michigan 48075
tel: 248-945-4777
fax: 248-352-1740
www.autosteel.org

TABLE OF CONTENTS

SUMMARY	3
INTRODUCTION	4
EXPERIMENTAL PROCEDURE	4
Specimen Preparation	4
Test Equipment and Procedure	4
RESULTS	5
A) Microstructural Data	5
B) Strain-Life Data	5
C) Cyclic Stress-Strain Curves	6
D) Mechanical Properties.....	7
REFERENCES.....	7

SUMMARY

The required chemical analysis, microstructural data, mechanical properties, cyclic stress-strain data and strain-controlled fatigue data for AISI 1541 normalized steel have been obtained. The material was provided by the American Iron and Steel Institute (AISI) in the form of metal bars. These bars were machined into smooth axial fatigue specimens. A monotonic tensile test was performed to measure yield strength, tensile strength and reduction of area. Twenty three specimens were fatigue tested in laboratory air at room temperature to establish a strain-life curve.

INTRODUCTION

This report presents the results of tensile and fatigue tests performed on a group of 24 normalized 1541 steel samples. The material was provided by the American Iron and Steel Institute.

The objectives of this investigation were to obtain a chemical analysis, and the microstructural data, mechanical properties, cyclic stress-strain data and 18 strain-life tests requested by the AISI bar group.

EXPERIMENTAL PROCEDURE

Specimen Preparation

The material for the study was received in the form of bars. Smooth cylindrical fatigue specimens, shown in Figure 1, were machined from the metal bars. The gauge sections of the fatigue specimens were mechanically polished in the loading direction using 240, 400, 500, and 600 emery paper. After polishing, a thin band of M-coat D acrylic coating was applied along the central gauge section. The purpose of the M-coat D application was to prevent scratching of the smooth surface by the knife edges of the strain extensometer, thus reducing the incidence of knife-edge failures. In total, 18 fatigue data points were generated at 10% load drop and 5 extra data points were generated at 50 % load drop, to check the difference in fatigue life between 10% and 50% load drop criteria.

Test Equipment and Procedure

A monotonic tension test was performed to determine the yield strength, the tensile strength, the percent of elongation and the percent reduction of area. Hardness tests were performed on the surface of three fatigue specimens using a "Rockwell B" scale. The hardness measurements were repeated three times for each specimen and the average value was recorded.

All fatigue tests were carried out in a laboratory environment at approximately 25 °C using an MTS servo-controlled closed loop electrohydraulic testing machine. A process control computer, controlled by FLEX software [1] was used to output constant strain and stress amplitudes in the form of a sinusoidal wave.

Axial, constant amplitude, fully reversed ($R=-1$) strain-controlled fatigue tests were performed on smooth specimens. The stress-strain limits for a given cycle of each specimen were recorded at logarithmic intervals throughout the test via a peak reading oscilloscope. Failure of a specimen was defined as a 10 percent drop in tensile peak load from the peak load observed at one half the expected specimen life. Five extra data points, one at each strain level, were generated at 50 percent load drop. For fatigue lives greater than 100,000 reversals, the specimens were tested in stress-control once the stress-strain loops had stabilized. For the stress-controlled tests, failure was defined as the separation of the smooth specimen into two pieces. For strain-controlled tests the loading frequency varied from 0.03 Hz to 5 Hz while in stress-controlled tests the frequency used was up to 30 Hz.

The first reversal of each fatigue test was recorded on an x-y plotter, allowing the elastic modulus (E) and the monotonic yield strength to be determined.

RESULTS

A) Microstructural Data

Figure 2 presents the ferritic-pearlitic microstructure of AISI 1541 normalized steel. The ASTM ferritic grain size number in the longitudinal (extrusion) direction and in the transverse direction is 10 according to ASTM E112. Type D inclusions with a rate of $2\frac{1}{2}$ were obtained based on the severity level number according to ASTM E45 method A. Inclusions of types A, B, and C were not observed. Figure 3 presents the observed inclusions of AISI 1541 normalized steel. The inclusion area was measured using a JAVA image analysis system. The volume fraction of pearlitic structure based on ASTM E562-95 and using the JAVA image analysis system was 71%. The chemical composition of AISI 1541 normalized steel was provided by SCI-Lab materials testing inc., 25 McIntyre place, unit 2, Kitchener, Ontario, N2R 1H1, and is shown in table 1.

B) Strain-Life Data

The fatigue test data for AISI 1541 normalized steel obtained in this investigation are given in table 2. The stress amplitude corresponding to each strain-amplitude was calculated from the peak load amplitude at one half the expected specimen life. Data for a 10% and a 50% load drop fell within the same scatter band.

A fatigue strain-life curve for the AISI 1541 normalized steel is shown in Figure 4, and may be described by the following equation:

$$\frac{\Delta\varepsilon}{2} = \frac{\sigma'_f}{E}(2N_f)^b + \varepsilon'_f(2N_f)^c$$

- where
- $\frac{\Delta\varepsilon}{2}$ = True total strain amplitude
 - $2N_f$ = Number of reversals to failure
 - σ'_f = Fatigue strength coefficient
 - b = Fatigue strength exponent
 - ε'_f = Fatigue ductility coefficient
 - c = Fatigue ductility exponent

Where $\sigma'_f = 1237$ MPa, $b = -0.1075$, $\varepsilon'_f = 0.369$ and $c = -0.512$. These values of the strain-life parameters were determined from fatigue testing over the range: $0.002 < \frac{\Delta\varepsilon}{2} < 0.01$.

C) Cyclic Stress-Strain Curves

Stabilized and half life stress data obtained from strain-life fatigue tests were used to obtain the companion cyclic stress-strain curve shown in figure 5. The true cyclic stress-strain curve is described by the following equation:

$$\varepsilon = \frac{\sigma}{E} + \left(\frac{\sigma}{K'}\right)^{\frac{1}{n'}}$$

- where
- ε = True total strain amplitude
 - σ = Cyclically stable true stress amplitude

K' = Cyclic strength coefficient
 n' = Cyclic strain hardening exponent

Where $K' = 1399.80$ MPa and $n' = 0.1934$.

D) Mechanical Properties

The engineering monotonic stress-strain curve is given in figure 6. The monotonic and cyclic properties are included in Appendix 1. The Hardness of the AISI 1541 normalized steel taken as the average of three randomly chosen fatigue specimens is given in Appendix 1. The individual hardness measurements are also given in Table 2. The true monotonic and true cyclic stress-strain curves plotted together are given in figure 7.

REFERENCES

- [1] Pompetzki, M.A., Saper, R.A., and Topper, T.H., "Software for High Frequency Control of Variable Amplitude Fatigue Tests," Canadian Metallurgical Quarterly, Vol. 25, No. 2, pp. 181-194, 198.
- [2] J. A. Bannantine, J. J. Comer, and J. L. Handrock (1990), In :Fundamentals of Metal Fatigue Analysis, Prentice Hall, London.

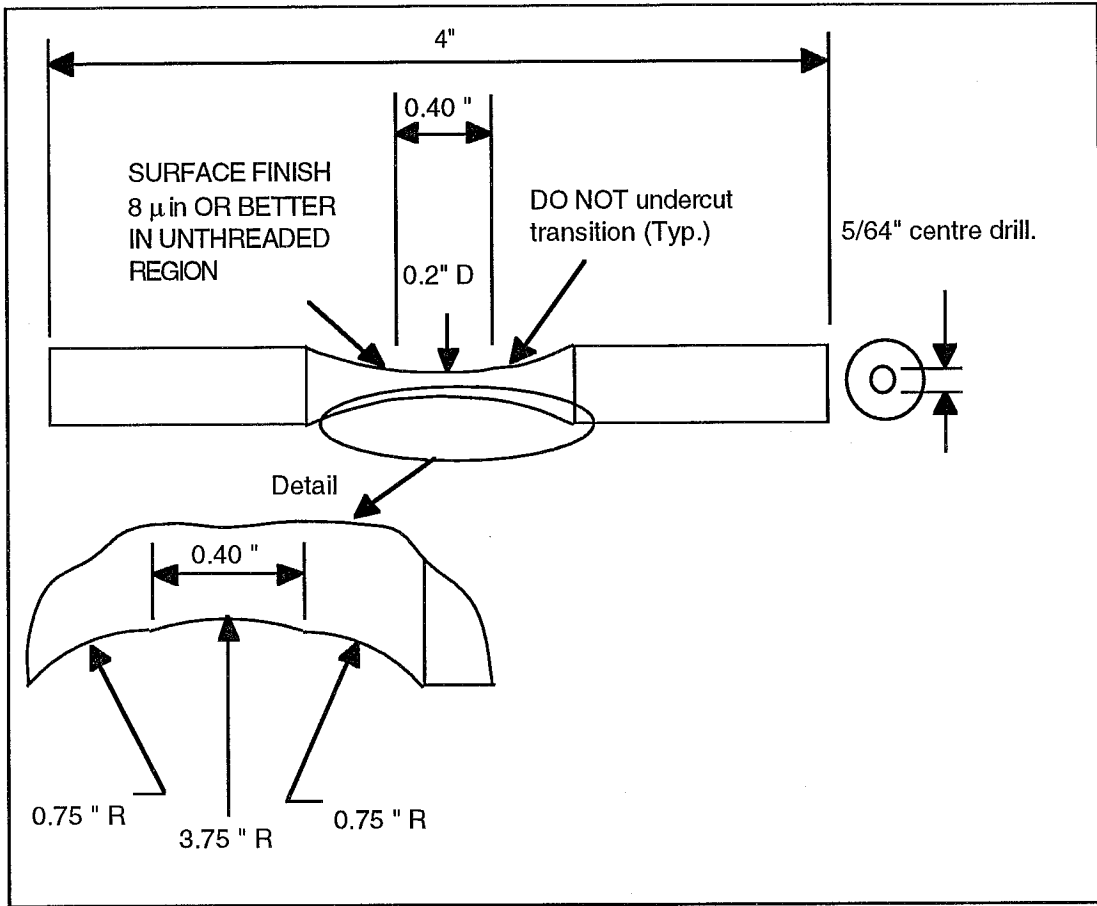


Fig. 1 Smooth cylindrical fatigue specimen

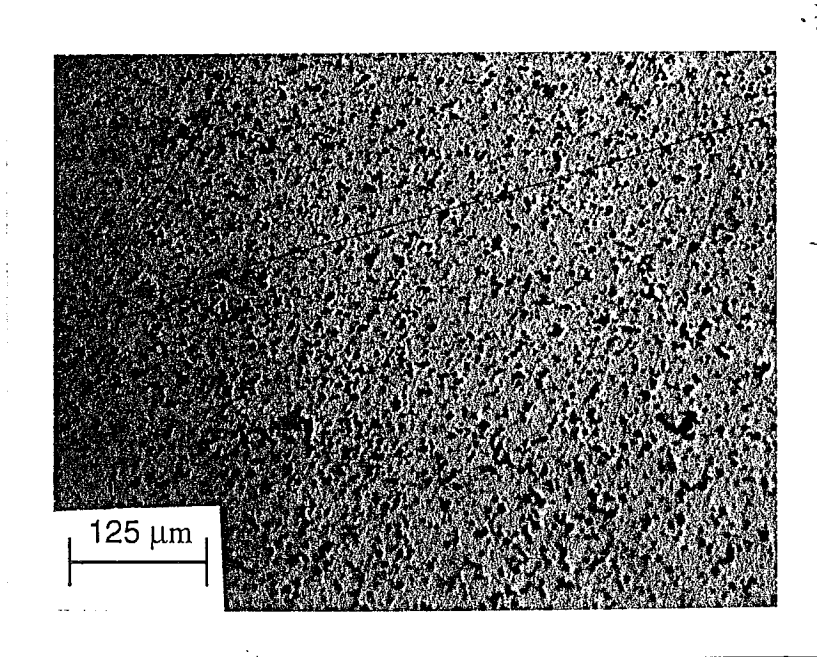


Fig. 3 Inclusions photomicrograph of AISI 1541 normalized steel (X200)

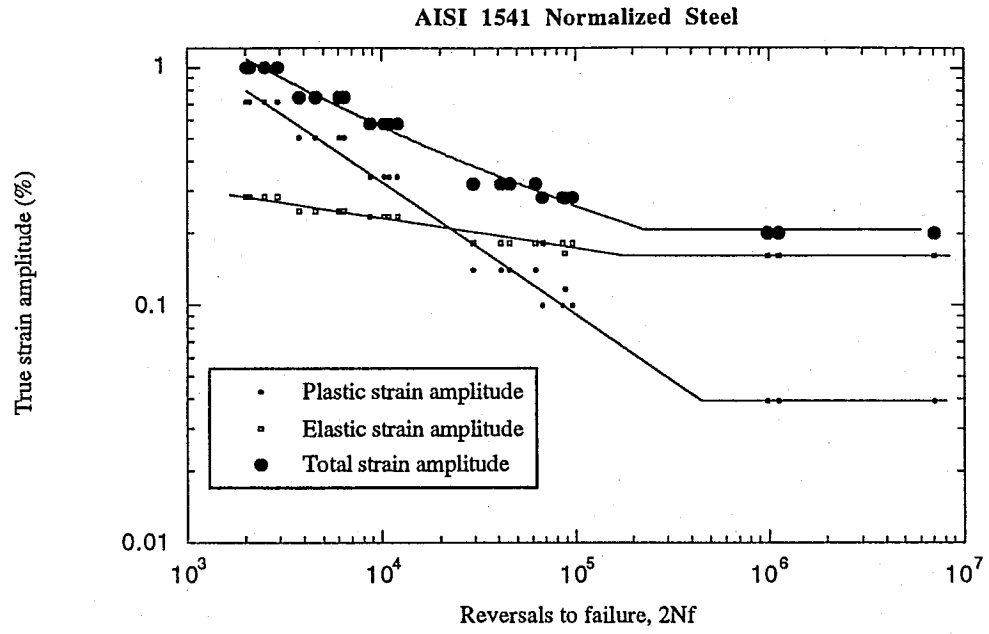


Fig. 4 Constant amplitude fully reversed strain-life curve for AISI 1541 normalized steel

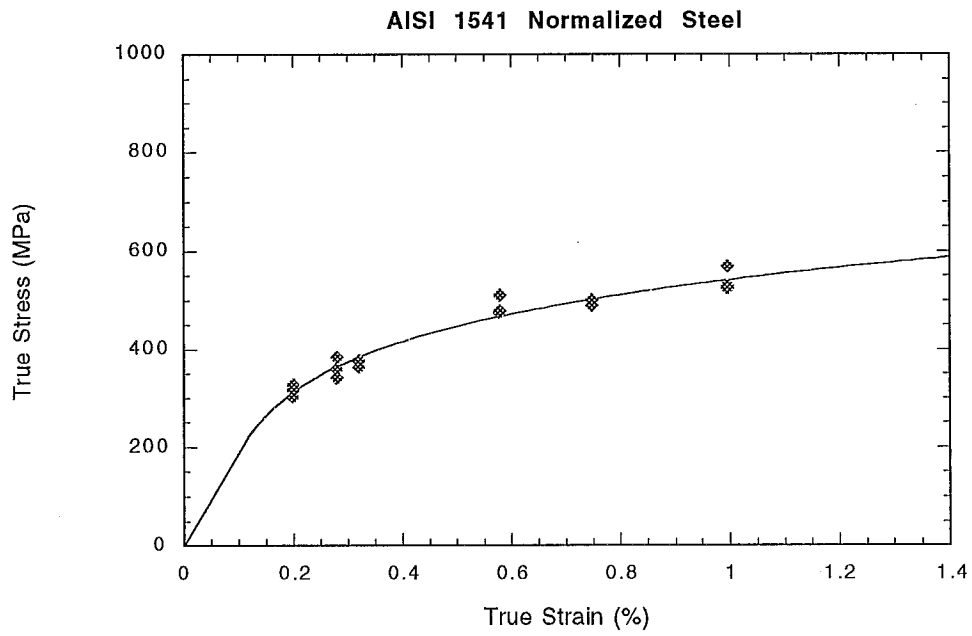


Fig. 5 Cyclic stress-strain curve for
AISI 1541 normalized steel

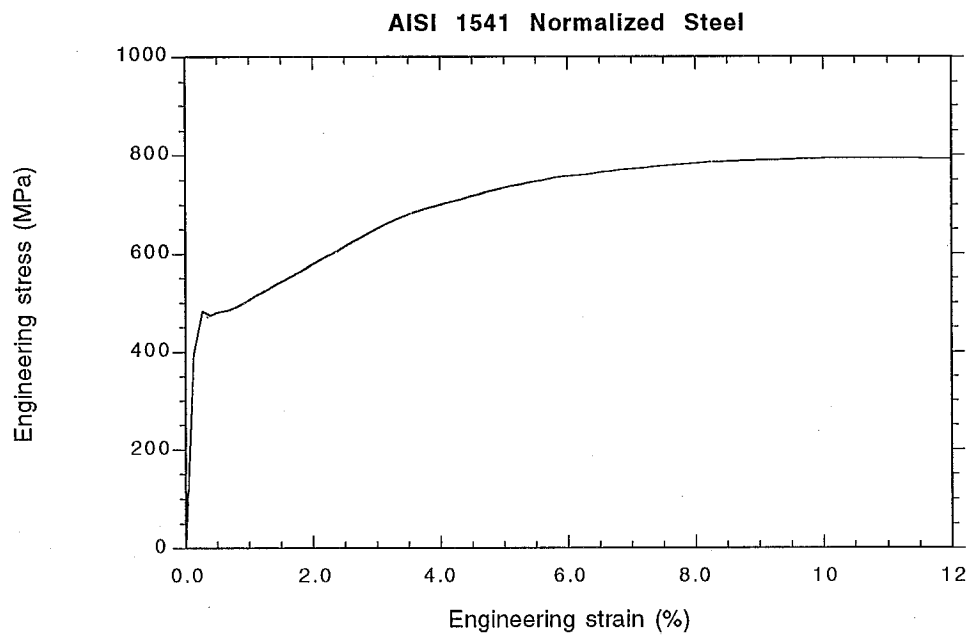


Fig. 6 Monotonic stress-strain curve for
AISI 1541 normalized steel

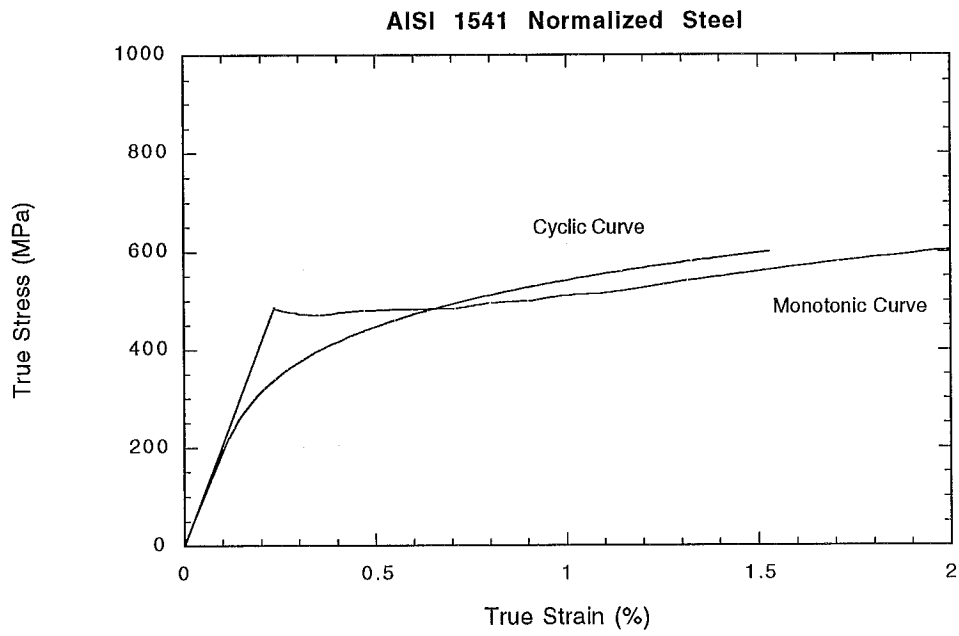


Fig. 7 Monotonic and Cyclic stress-strain curves for AISI 1541 normalized steel

Table 1 Chemical composition of AISI 1541 Normalized Steel

Carbon, C	0.41%
Manganese, Mn	1.37%
Phosphorous, P	0.009%
Sulfur, S	0.098%
Silicon, Si	0.17%
Copper, Cu	0.1%
Nickel, Ni	0.05%
Chromium, Cr	0.07%
Molybdenum, Mo	0.01%
Vanadium, Va	0.002%
Calcium, Ca	0.001%
Boron, Bo	0.0029%
Aluminum, Al	<0.001%
Titanium, Ti	0.001%
Oxygen, O	0.0029%
Columbium, Cb	0.002%

9/28

Table 2 Tensile and Fatigue Test Data for AISI 1541 Normalized Steel

Spec	TRUE Total Strain Amplitude(%)	TRUE Stress Amplitude (MPa)	TRUE Plastic Strain Amplitude(%)	TRUE Elastic Strain Amplitude(%)	Fatigue Life (Reversals, 2Nf)	MONOTONIC Young's Modulus(GPa)	ENG. Load Drop (%)	Hardness (HRB)
5	0.747	506.12	0.493	0.254	3756	190	10	92
26	0.319	367.59	0.134	0.185	29714	205	10	
7	0.578	477.52	0.338	0.240	8740	189	10	
27	0.279	339.79	0.108	0.172	88224	205	10	91
28	0.995	580.99	0.705	0.291	2922	189	10	92
19	0.279	383.25	0.086	0.193	85412	195	10	
14	0.199	315.83	0.040	0.156	7075200	200	10	
17	0.319	375.50	0.130	0.189	62066	202	10	
29	0.319	375.50	0.129	0.189	45986	192	10	92
13	0.578	479.51	0.337	0.241	12086	202	10	
23	0.578	473.56	0.340	0.238	10898	200	10	
3	0.747	502.15	0.495	0.252	6383	198	10	
18	0.747	500.16	0.496	0.251	6030	193	10	
8	0.995	521.30	0.735	0.261	2006	190	10	91.5
2	0.995	529.26	0.731	0.265	2500	198	10	
20	0.279	359.54	0.097	0.181	67486	200	10	
9	0.199	327.67	0.034	0.165	1119300	191	10	
21	0.199	302.01	0.047	0.152	988810	195	10	92
12	0.995	387.99	0.801	0.194	2100	200	50	
16	0.319	444.67	0.095	0.224	41000	210	50	
11	0.578	465.64	0.344	0.234	10314	191	50	
24	0.279	383.25	0.086	0.193	95964	196	50	91
15	0.747	579.55	0.457	0.291	4546	199	50	

9/98

Appendix 1

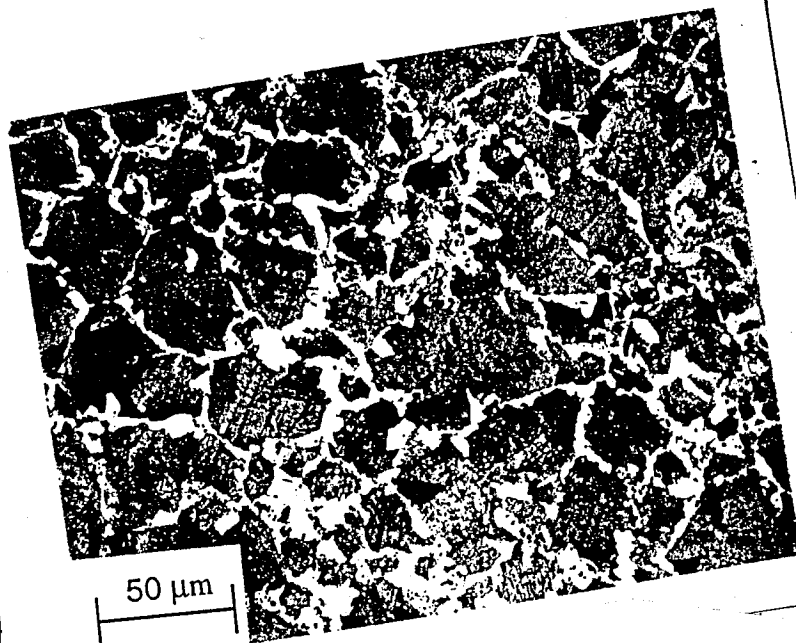
Monotonic Properties for AISI 1541 Normalized Steel

Average Elastic Modulus, E	=	197 GPa
Upper Yield Strength	=	484.17 MPa
Lower Yield Strength	=	471.20 MPa
Ultimate tensile Strength	=	783.21 MPa
% Elongation	=	38.66 %
% Reduction of Area	=	55.11 %
True fracture strain, $Ln (A_i / A_f)$	=	80 %
True fracture stress, $\sigma_f = \frac{P_f}{A_f}$	=	1468 MPa
Bridgman correction, $\sigma_f = \frac{P_f}{A_f} \left/ \left(1 + \frac{4R}{D_f} \right) \right. Ln \left(1 + \frac{D_f}{4R} \right)$	=	1206.8 MPa
Monotonic strength coefficient, K	=	1165 MPa
Monotonic strain hardening exponent, n	=	0.143
Hardness, Rockwell B (HRB)	=	91
Hardness, Brinell	=	180

Cyclic Properties for AISI 1541 Normalized Steel

Cyclic Yield Strength, (0.2% offset) = $K'(0.002)^{n'}$	=	421 MPa
Cyclic strength coefficient, K'	=	1399.8 MPa
Cyclic strain hardening exponent, n'	=	0.1934
Fatigue Strength Coefficient, σ'_f	=	1237 MPa
Fatigue Strength Exponent, b	=	-0.1075
Fatigue Ductility Coefficient, ϵ'_f	=	0.369
Fatigue Ductility Exponent, c	=	-0.512

P_f :	Load at fracture.
A_i and A_f :	Specimen cross-section area before and after fracture.
R:	Specimen neck radius.
D_f :	Specimen diameter at fracture.

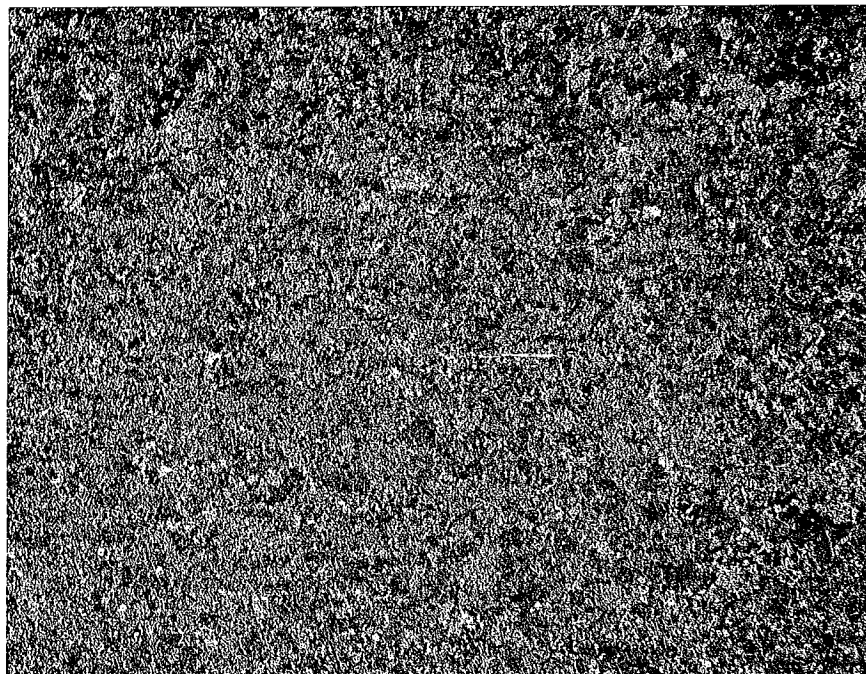


**ITER 1: Photomicrograph of SAE 154 steel,
Normalized to Rb-91. 500X Mag.**

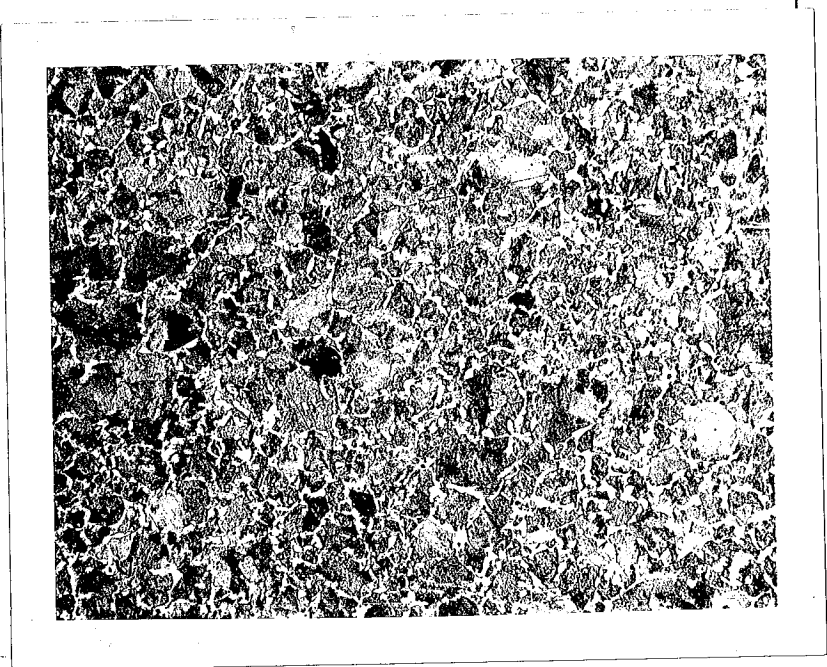
180104N

(a) Longitudinal direction

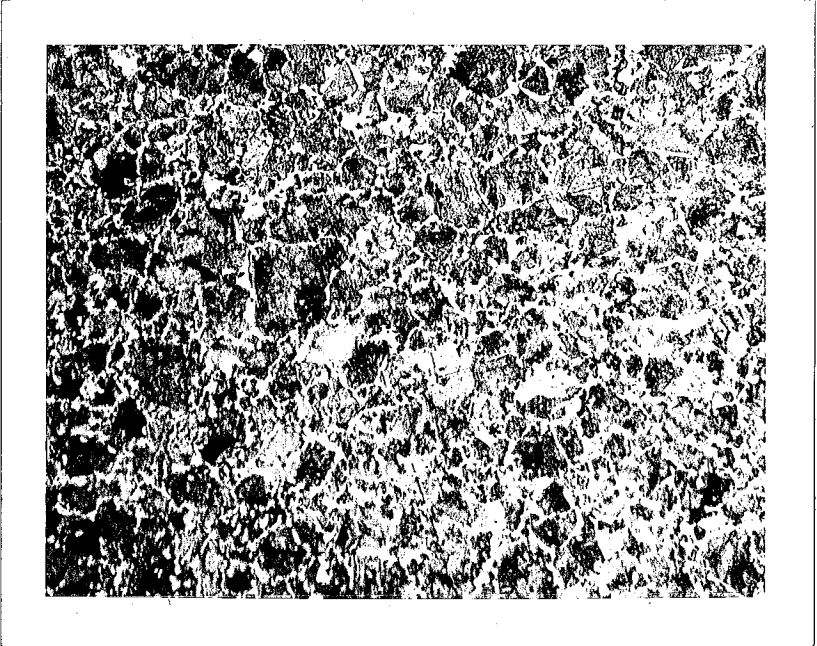
(1)



**ITER 1: Photomicrograph of SAE 1541 steel,
Normalized to Rb-91. 100X Mag.**



(a) Longitudinal direction (~~X200~~)



(b) Transverse direction

Fig. 2 photomicrographs of AISI 1541 normalized steel (X²⁰⁰₅₀₀)

AISI Bar Application Group Fatigue Project Test Matrix (6-9-98)

Iter. No.	Steel	Supplier	Status	Part Fabrication	Fabricated Hdns	Microstructure	School	Bar or Part
1	1541	RES	Complete 2-4-98	Normalize 1650F		Ferrite/Pearlite	Waterloo	HR Bar
2	1541	RES	Complete 2-4-98	Cold Size/Form	Rb 85 min.	Ferrite/Pearlite	Waterloo	HR Bar
3	1050M	Stelco	Complete 7-30-97	Normalize 1650F		Ferrite/Pearlite	Waterloo	Hr Bar
4	1050M	Chrysler	Complete 6-9-98	Hot Forge, Cold Extrude (Core)	Rc 35 max.	Martensite	Waterloo	Axles
5	1050M	Chrysler	Complete 6-9-98	Induction Surface Hardened (Case)	Rc 58 min.	Martensite	Waterloo	Axles
6	1090	NS	Complete 6-9-98	Normalize 1650F		Pearlite	Waterloo	Hr Bar
7	1090M	Chrysler	Complete 6-9-98	Hot Form + Acc. Cool	BHN 341-444	Martensite/Bainite	Waterloo	Stab Bar
8	1090	Chrysler	Complete 2-4-98	Hot Form + Q&T	BHN 341-444	Martensite	Waterloo	Stab Bar
9*	1090M	GM/AMM	Complete 2-4-98	Hot Form + Acc. Cool	BHN 302-363	Martensite/Bainite	Waterloo	Stab Bar
10*	1090	GM/Mather	Complete 6-9-98	Hot Form + Austemper	BHN 3.0-3.5	Bainite	Waterloo	Stab Bar
11	1141(AIFG)	RES	Complete 6-9-98	Normalize 1650F		Ferrite/Pearlite	Toledo	Hr Bar
12	1141(AIFG)	RES	Complete 6-9-98	Reheat, Q&T	BHN 229-269	Martensite	Toledo	Hr Bar
13	1141(NbFG)	NS	Complete 6-9-98	Normalize 1650F		Ferrite/Pearlite	Toledo	Hr Bar
14	1141(NbFG)	NS	Complete 6-9-98	Reheat, Q&T	BHN 229-269	Martensite	Toledo	Hr Bar
15	1141(VFG)	NS	@Toledo	Normalize 1650F		Ferrite/Pearlite	Toledo	Hr Bar
16	1141(VFG)	NS	@Toledo	Reheat, Q&T	BHN 229-269	Martensite	Toledo	Hr Bar
17	1141(VFG)	NS	@Toledo	Normalize @ High Temp (1750F)	TBD	Ferrite/Pearlite	Toledo	Hr Bar
18	1038	Stelco	Complete 10-9-97	Normalize 1650F		Ferrite/Pearlite	Toledo	Hr Bar
19	1038	Stelco	Complete 6-9-98	Cold Size/Form	Rb 85 min.	Ferrite/Pearlite	Toledo	Hr Bar
20	1038	Stelco	@Toledo-Re-H.T.	Reheat, Q&T, (Temper @ 930F)	Rc 20-30	Martensite	Toledo	Hr Bar
21	10V45	Inland	@Toledo	Normalized 1650F		Ferrite/Pearlite	Toledo	Hr Bar
22	10V45	Inland	@Toledo	Reheat, 2250F, Deform @ 2000F, FAC	RC 25-30	Ferrite/Pearlite	Toledo	Hr Bar

*These iterations will be supplied by GM, and funded separately from the rest of the program.